



GLA UNIVERSITY

Recognised by UGC Under Section 2(f) & 12B Status

Accredited with **A+** Grade by **NAAC**

Mathura | Greater Noida



INFORMATION BROCHURE 2026

WHERE GREAT FUTURES BEGIN

www.gla.ac.in



OUR INSPIRATION



Late Shri Ganeshi Lal Ji Agrawal
(1910-1977)

OUR JOURNEY

The journey of GLA University began in 1998, when Shri Narayan Das Agrawal established the GLA Institute of Technology and Management, inspired by his father's vision for quality education. Over the years, this vision evolved into the GLA Group of Institutions, and in 2010, it was granted university status through the Uttar Pradesh State Legislative Act (UP Act 21 of 2010).

Today, GLA University stands as a recognised centre of higher learning, approved by the UGC under Section 2(f) with 12B status. It holds a prestigious NAAC A+ accreditation with a score of 3.46/4. The university is a member of the Association of Indian Universities (AIU), with management programmes accredited by IACBE (USA), and is also an educational member of AACSB. The Institute of Pharmaceutical Research has been ranked 48th in India by NIRF.

With a thriving student community of over 24,000 learners, GLA University offers a comprehensive academic portfolio across Engineering, Management, Commerce, Legal Studies, Pharmacy, Biotechnology, Agriculture, Applied Sciences & Humanities, Library Sciences, and more, at Diploma, Undergraduate, Postgraduate, and Doctoral levels.



CHANCELLOR'S NOTE

For almost three decades, GLA University has stood for excellence in higher education, earning trust through quality, integrity, and impactful learning. Our focus is on nurturing capable, confident, and industry-ready professionals who excel beyond the classroom. With a strong ecosystem of leading corporate partners and robust placement opportunities, students gain access to the right platforms to launch their careers. At the same time, a vibrant range of clubs, activities, and initiatives encourages them to grow personally and explore diverse interests.

Our academic philosophy blends interactive learning, real-world exposure, and holistic development. At GLA University, a culture rooted in values meets forward-looking education to create a truly enriching experience. Supported by state-of-the-art infrastructure, a dynamic campus, and an inspiring learning environment, we aim to offer an educational journey that is distinguished, future-focused, and truly world-class.

"Education is not just about degrees, it is about shaping character, values, and a sense of purpose. At GLA University, we believe in nurturing confident, responsible, and compassionate individuals who contribute meaningfully to society. I wish every student the courage to dream big and the determination to turn those dreams into reality."



Narayan Das Agarwal
Hon'ble Chancellor

Prof. Anup Kumar Gupta

Vice Chancellor, GLA University



At GLA University, we are committed to providing the learning, guidance, and opportunities that help you grow and realise your true potential. Your journey may present challenges, but you will never walk it alone. With the support of dedicated teachers, mentors, and peers, you will find the encouragement and direction you need. The education you gain here is an investment in your future, shaping not only your career but the person you aspire to become. Stay focused, stay determined, and keep moving forward with confidence.

"Every student carries a distinct spark. At GLA, we refine that spark into confidence, clarity, and a purposeful future."

Ashok Kumar Singh

Registrar, GLA University



It is a pleasure to welcome you to the GLA University family. As you begin this new journey, you join not just a campus but a caring community that supports your growth. Guided by mentors, seniors, and peers, you will always find encouragement along the way. Our dedicated faculty create a vibrant learning environment where ideas thrive. Every experience at GLA is designed to help you grow, learn with confidence, and prepare for a meaningful and successful future.

"University life shapes discipline and direction. Stay curious, choose with intention, and we will support your journey toward meaningful achievements."

Neeraj Agrawal

Chief Executive Officer, GLA University



Education has the power to shape lives, open minds and create lasting impact. At GLA University, we believe learning begins with curiosity and grows through guidance, experience and perseverance. Our supportive environment encourages students to think boldly, adapt to change and aim higher. With a strong focus on values, innovation and academic excellence, we prepare young minds to become capable professionals and responsible individuals ready to make a meaningful difference.

"Think ambitiously and trust your potential. With curiosity and commitment, every step you take builds a stronger, brighter future."

Dr. Vivek Agrawal

Chief Financial Officer, GLA University



At GLA University, we prepare students to thrive in a world shaped by ideas, innovation and constant change. Our learning environment encourages ambition, original thinking and the confidence to turn ideas into meaningful impact. Choosing the right university shapes your future opportunities and outlook. Here, you become part of a community that values excellence, global perspective and purposeful growth, helping you move forward with clarity, confidence and aspiration.

"Education is your most valuable investment. Build capability, clarity, and purpose today to open exceptional opportunities tomorrow."

Members of Governing Body and Executive Council



Shri Narayan Das Agrawal
Chancellor and Chairman
Governing Body



Prof. Anup Kumar Gupta
Vice Chancellor and Chairman
Executive Council



Shri Neeraj Agrawal
CEO- GLA University



Dr. Vivek Agrawal
CFO-GLA University



Shri Narendra Agrawal
Industrialist



Shri Rajesh Garg
Industrialist



Prof. Rajeev Tripathi
Former Vice Chancellor
Rajeev Gandhi Proudyogiki
Vishyavidyala, Bhopal



Prof. S. K. Kak
Former Vice Chancellor
Mahamaya Technical
University, Noida



Shri Kuldeep Arora
Sr. Chartered Accountant



Shri Ram Gopal Agrawal
Sr. Advocate



Shri Ashok Kumar Singh
Registrar
GLA University



Prof. A.K. Tripathi
Professor
IIT, BHU, Varanasi



Prof. Nitin Seth
Professor
Indian Institute of Foreign
Trade, New Delhi



Prof. Vishal Goyal
Director-IQAC
GLA University



Dr. Himani Singh
Associate Professor,
Management, GLA University



Shri Ramji Lal
Finance Officer
GLA University

AWARDS & RECOGNITIONS



NAAC A+
3.46 NAAC SCORE



Government of
Uttar Pradesh



Accreditation for
B. Sc (H) Agri Program



12B Status by UGC
Among the top private
universities in India to
receive this honour



Association of
Indian Universities



BAR Council
of India



48th
RANK IN INDIA
PHARMACY IN 2025



Pharmacy Council
of India



National Council
for Teacher Education



Worldwide Rank Band
781-790
Southern Asia
244



Worldwide Rank Band
1001-1200
All India Rank
44



Accreditation for
Management &
Commerce Programs



Member of
AACSB Business
Education Alliance

Outlook

No. 1 Private University In UP by
Outlook



दैनिक जागरण

Best Private University in UP by
'Dainik Jagran'

Times School

No. 3 for MBA and No. 6 for BBA
among all private universities in
India.

**INDIA
TODAY**

Ranked #3 in UP for BBA by 'The
India Today Group'



THE TIMES OF INDIA

Ranked #3 in UP amongst the Top
Engineering Colleges by 'The
Times of India'

CAREERS360

Rated 'AAAA+' amongst Young &
Promising Universities in North
India by 'CAREERS360'



G. L. A. UNIVERSITY
MATHURA, U.P.

GLA UNIVERSITY MATHURA

WHERE FUTURES
TAKE SHAPE

THE HERITAGE OF HIGHER EDUCATION



24,000+
Students



850+
Faculty



220+
Smart Classrooms



51,000+
Alumni

GLA University, Mathura, is known for its strong academic standards and a student focused learning environment. With national approvals, global accreditations and notable rankings, the University continues to grow as a dynamic centre of higher education. Modern infrastructure, an active research culture and strong industry engagement create valuable opportunities for students to learn and grow. At GLA, education extends beyond classrooms, preparing learners for successful careers and responsible roles in society.

Key Highlights:

- NAAC A+ accreditation with a score of 3.46
- Recognised under Section 12B of the UGC Act
- Approved by UGC, PCI, NCTE and BCI
- Accredited by IACBE
- Recognised by ICAR
- Member of AUAP and AIU

Academic Strength and Research:

- UG, PG, diploma and doctoral programmes across multiple disciplines
- 24,000+ students and 850+ faculty members
- 220+ smart classrooms and 14 research centres
- 12,500+ research publications and 100+ granted patents
- 65 supported start ups and ₹27 crore in funded research projects
- 130+ national and international MoUs
- 51,000+ alumni worldwide

Rankings and Recognition:

- Institute of Pharmaceutical Research ranked 48th in India in NIRF 2025
- Times Higher Education World University Rankings 2026: 1001–1200 band globally
- Among the top 44 universities in India in THE World University Rankings 2026
- Outlook: No. 1 private university in Uttar Pradesh and No. 6 nationally
- Times B-School Rankings: MBA ranked No. 3 and BBA ranked No. 6 among private universities in India

Through strong academics, research and global collaborations, GLA University continues to nurture skilled professionals and responsible global citizens.

GR. NOIDA CAMPUS

A Different Way to Build **ENGINEERS & MANAGERS**

Not an extension. A re-designed learning model.

GLA didn't **expand for scale.** ———
————— We created
industry ecosystem.
inside the campus

Where learning is not limited to classrooms,
but shaped by real industry expectations.

Forward Learning Strong Outcomes



What Makes **GLA Greater Noida** Different?



Curriculum by Industry



- Designed & updated with real industry inputs
- Built around current technologies like AI
- Not outdated, not theoretical

Delivery by Industry



- Subjects taught by industry professionals
- Learning through application, not lectures
- Supported by experienced academic faculty

Evaluation by Industry



- Project-based & real-world assessment
- Case-based evaluation
- Focus on application not memorization

Key Differentiators:

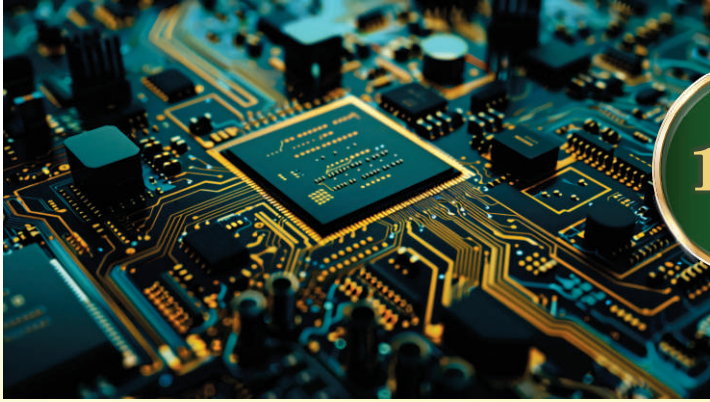
- Small, Focused Batches (Limited Intake)
- High-Caliber Peer Group (JEE-focused students)
- Learning by Doing Approach
- Early Industry Exposure --> Faster Career Readiness

Industry Design +
Industry Learning +
Industry Evaluation =
Career-Ready Graduates



**While others focus on infrastructure,
we focus on learning outcomes.**





1998

Inception of
GLA Institute of Technology
& Management

2006



Establishment of:

- Institute of Business Management
- Institute of Professional Studies
- Institute of Pharmaceutical Research

2008

GLNA Institute of Technology &
Management Emerged



2010

GLA Evolved into
GLA University

2014



A New Era
Begins with
Faculty of
Education

2025

GLA launches Code Xperience Centre in collaboration with Capgemini.

Code Xperience Center

Powered by



2024

Started a New Industry-Integrated Campus in Greater Noida

2022



- Inauguration of CSED- Industry 4.0 Facility Hon'ble CM of UP, Yogi Adityanath Ji
- Establishment of GLA University Online, CDOE



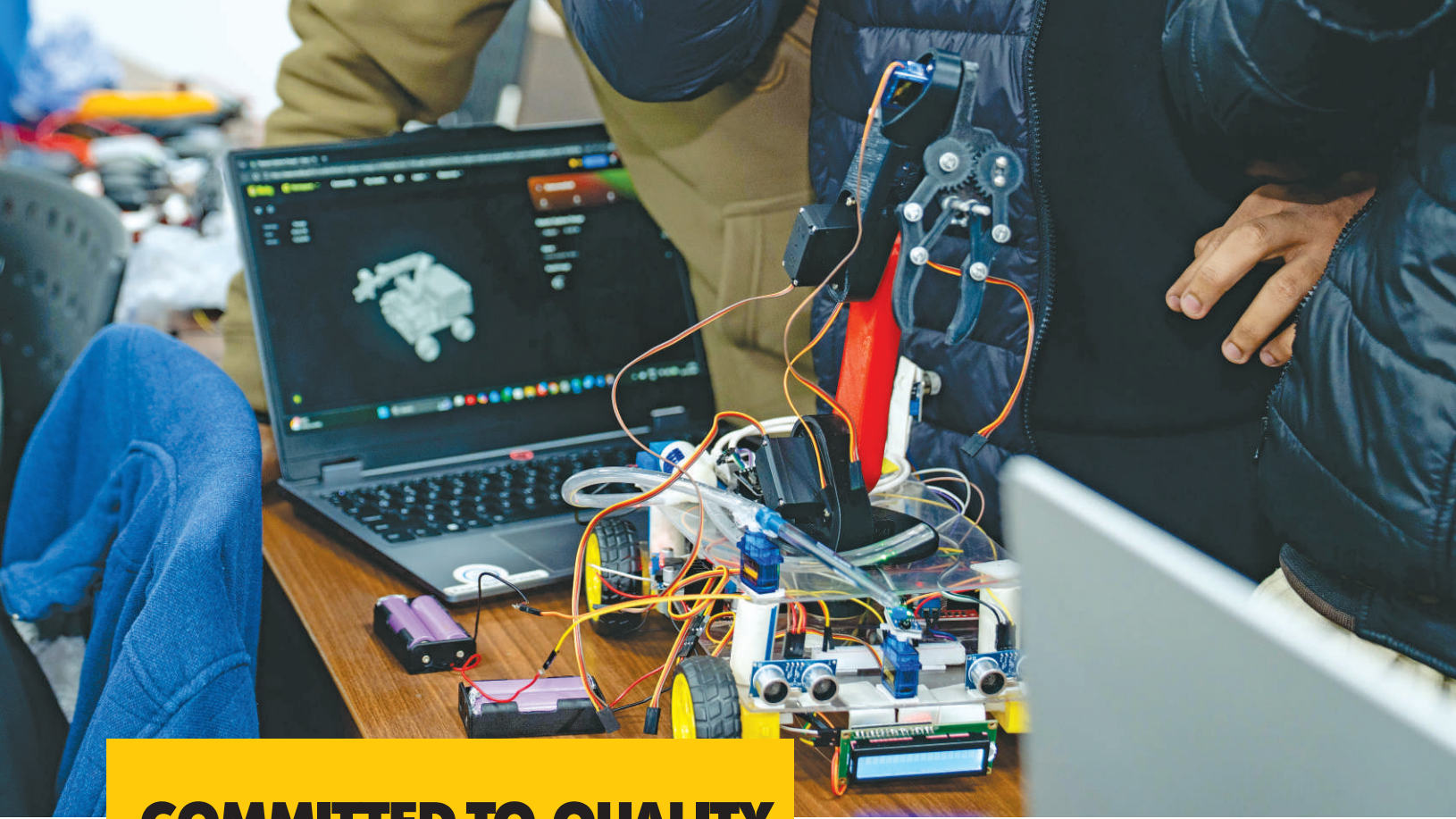
2019

Inauguration of Faculty of Agricultural Sciences

2018

Establishment of Institute of Legal Studies & Research





COMMITTED TO QUALITY DEDICATED TO YOU

At GLA University, learning is driven by purpose, guided by expertise, and strengthened by real world exposure. Every experience here is designed to shape confident professionals, innovative thinkers, and responsible leaders ready for tomorrow.

51K+ Alumni across MNCs, public sector, and global ventures

27 Crore government-funded research projects

India's 14th institute with a govt. backed **NewGen IEDC Lab**

7000+ Alumni employed overseas

60 LPA Highest CTC offered by Microsoft

6.45 LPA Overall Average CTC

650+ Recruiters Batch 2026

1500+ Alumni placed in Fortune 500 companies

8.1 LPA Average CTC in Engineering

19.8 LPA Highest CTC in Management

157 State-of-the-art laboratories

14 Dedicated research centres

86% Overall placement over the past five years

3000+ Job offers Batch 2026

850+ Experienced faculty members

130+ International and national collaborations

ELEVATING EDUCATION BEYOND BORDERS



NATIONAL MOUs



and Many more....

INTERNATIONAL MOUs



and Many more....

GLA University, a true emblem of academic excellence, has forged over 130 partnerships with distinguished institutions worldwide. From the USA and the UK to Australia and France, these collaborations offer students unparalleled exposure through international immersion, faculty exchange, joint research, and enriched curricula. Our mission to cultivate global leaders extends far beyond geographical boundaries, shaping a dynamic and inclusive learning environment. At GLA University, every student steps forward as a global citizen, ready to create a meaningful impact on the world stage.

GUIDING YOU FROM LEARNING TO LEADERSHIP

The Training and Placement Cell at GLA University serves as a distinguished gateway to professional excellence. With a strong focus on industry-aligned readiness, the T&P Cell refines students' technical strengths, communication abilities, and workplace confidence. Through curated training programmes, expert guidance, and meaningful industry collaborations, students gain a clear edge in today's competitive landscape. The university's T&P Cell ensures that every learner is prepared to step into the professional world with clarity, competence, and ambition.

Internships with Top MNCs Industry Exposure That Sets You Apart

<p>B. Tech. CSE- Batch: 2026</p> <p>Google</p> <p>STIPEND ₹16.4 Lakh per annum</p> <p>Yash Kumar Kasaudhan, Ishika Goyal</p>		<p>B. Tech. CSE - Batch: 2026</p> <p>Microsoft</p> <p>STIPEND ₹15 Lakh per annum</p> <p>Gauri, Chhavi, Anjali</p>			
<p>Aparna Nagpal B.Tech. CSE Batch: 2026</p>	<p>Radhika Sharma B.Tech. CSE Batch: 2026</p>	<p>Vinnie Asnani B.Tech. CSE Batch: 2026</p>	<p>Priyanshi Gupta B.Tech. CSE Batch: 2026</p>	<p>amazon Development Centre India</p> <p>Industry Internship</p> <p>STIPEND ₹1.10 Lakh per month</p>	<p>J.P.Morgan</p> <p>STIPEND ₹9.0 Lakh per annum</p> <p>Naman Gupta B. Tech. CSE- Batch: 2026</p>
<p>Vidhi Ajmera B. Tech. CSE- Batch: 2026</p> <p>Goldman Sachs</p> <p>STIPEND: ₹19.5 Lakh per annum</p>	<p>Pavitra Malhotra B. Tech. CSE - Batch: 2027</p> <p>STIPEND 60K per month + ₹1.5 Lakh</p> <p>Adobe</p>	<p>Shrashti Jain B.Tech. CSE (IIOT), Batch: 2026</p> <p>SDE Intern</p> <p>STIPEND ₹1.0 Lakh per annum</p>			
<p>blinkit India's Last Minute App</p> <p>STIPEND ₹1.0 Lakh per month</p> <p>Krish Agrawal B. Tech. CSE (DA), Batch: 2026</p>	<p>WD</p> <p>STIPEND ₹40,000 per month</p> <p>Sanskriti Mohit Garg B. Tech. CSE, Batch: 2027</p>	<p>DELL Technologies</p> <p>Aparna Gautam B.Tech. CSE, Batch: 2027</p> <p>Arnav Pandey B.Tech. CSE, Batch: 2027</p> <p><i>and many more....</i></p>			

A Semester at IITs

← Yes - You Read That Right!

OUR SHINING GLAdiators



Piyush Verma
60 LPA
Microsoft



Vidhan Sharma
55 LPA
NJUMA CONSULTING



Bhoomika Mehra
48 LPA
amazon



Kushagra Gangwar
44 LPA
amazon



Pranjul Maheshwari
41 LPA
paloalto NETWORKS



Lucky Thandel
36 LPA
CYBERWISSEN
Committed to Excellence



Priyansh Garg
35 LPA
servicenow



Hardik Gaur
33 LPA
AUTODESK



Shalini Kumari
32 LPA
amazon



Manas Singh
31 LPA
CISCO



Abhay Kumar
28 LPA
TEKION



Meghansh Bansal
28 LPA
TEKION



Shivang Sunil Shukla
27 LPA
JUSPAY



Radhika Sharma
27 LPA
JUSPAY



Aditya Vishwanathan
25 LPA
CATALOG



Chirag Singla
23 LPA
zscaler

and many more....

GLadiators WORK AT

CIVIL ENGINEERING



MECHANICAL ENGINEERING



and Many more....

MANAGEMENT



and Many more....

COMPUTER SCIENCE & ENGINEERING



and Many more....

ELECTRONICS AND COMMUNICATION ENGINEERING



ELECTRICAL & ELECTRONICS ENGINEERING



PHARMACY / BIOTECHNOLOGY



DIPLOMA ENGINEERING



LAW



OUR EMINENT ALUMNI



Sharad
AVP
HSBC India



Brij Bihari Sharma
GM HR
PG Electroplast Limited



Bankey Sharma
Principal Engineering Manager
Microsoft



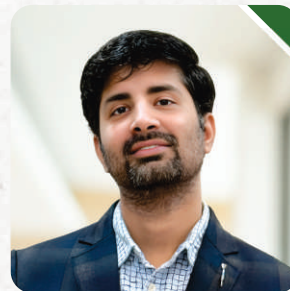
Priyank Gupta
Director
W3villa Technologies



Anurag Mittal
Managing Director
Techstreet Solutions



Pulkit Arora
Director
CYK Hospitalities



Milan Agarwal
Founder
NotJuzApp Software



Unnati Gupta
Manager
Wipro



Simranjeet Singh
Managing Director
CYK Hospitalities



Sumit Singh
Functional Consultant
Arcelormittal Digital
Consulting



Kamlendra Krishna Tripathi
Operation Director
of Oceansat-02
ISRO



Bhupendra Goyal
Assistant Director
Ministry of Finance

GLA University takes immense pride in its successful alumni who have become trailblazers in diverse fields globally. With a solid foundation and cutting-edge education, GLA graduates thrive as entrepreneurs, industry leaders, innovators, and top government officials. Their achievements reflect the university's commitment to nurturing talent and fostering a culture of excellence. These accomplished individuals stand as a testament to GLA University's dedication to shaping future leaders and contributing to society.



Himanshu Katiyar
Assistant Director (IES)
Ministry of Power



Chander Prakash
Assistant Director (IES)
Ministry of Power



Prashant Sharma
General Manager (IAS)
FCI, Central Govt.



Shashank Jaiswal
PF Commissioner-EPFO
Central Govt.



Dr. Aditya Shukla
Senior Technical Leader
CISCO



Raj kumar Dubey
Vice President
J.P.Morgan



Prashant Singh
Pilot- IndiGo



Abhinav Singh
IES
Central Govt.



Kanchan Varandani
AVP Data Scientist
BARCLAYS



Avinash Garg
Principal SW Engg. Manager
Microsoft



Gaurav Kumar Dang
Software Architect
Cadence



Mr. Ashutosh Gupta
General Manager
SAMSUNG



Enter the era of **new age** innovation

GLA University stands as a destination where future-focused learning meets real-world relevance. Every program is shaped with precision to match the pulse of modern industries, preparing students to step into their careers with purpose and readiness. Our students, proudly known as GLAdiators, grow into professionals who carry both confidence and competence into every challenge they take on.

What sets us apart is our commitment to contemporary education. We stay ahead of academic innovation, bringing our students the latest tools, technologies, and trends that define today's digital world. With active inputs from industry experts, our curriculum evolves continuously to reflect the breakthroughs and expectations of tomorrow's workplace.

Here, GLAdiators immerse themselves in transformative fields like **Artificial Intelligence, Machine Learning, Generative AI, Robotics, Gaming Technology, Cyber Security, IoT, Data Analytics**, and more. Through experiential learning and hands-on projects, they gain practical mastery that elevates their professional edge.

At GLA University, education goes beyond knowledge. It becomes a launchpad for global opportunities and future-ready careers. Step in and discover a journey shaped by innovation, growth, and unlimited potential.



Robotics



Business Analytics



Artificial Intelligence & Machine Learning



Financial Markets & Banking



Gaming Technology



Cyber Security



Smart Manufacturing



EV Technology



IoT



Incubator Recognized & Supported by



SPARKL GLA TBI (Society for Promotion and Acceleration of Knowledge-Based Entrepreneurship) is a registered Technology Business Incubator of GLA University supporting early-stage startups. It provides mentoring, infrastructure, ecosystem access, and capacity-building support to entrepreneurs. Recognized by various state & central India government agencies, it manages a ₹2 crore seed fund corpus from SISFS and various funding scheme from Meity GENESIS & StartinUP (UP State Startup Policy). SPARKL GLA TBI actively drives startup growth and contributes to sustainable economic development.

OUR INNOVATION ECOSYSTEM

Impact at a Glance

- 45 Startup Incubated
- ₹12 Crores funding opportunity enabled
- Funded startup with seed funding (including grants) of more than ₹1.5 Crores through SISFS and Meity GENESIS Scheme
- 130+ Prototype Developed at NewGen IEDC
- 55 Patents filed with grant support from NewGen IEDC
- 12 Patents Granted

From Idea to Impact

- Pre-incubation and incubation support
- Startup focused events and hackathons
- Access to state and central startup funding schemes
- Mentorship from experienced startup founders and investors
- Dedicated Prototyping Development Lab and Co-working space
- Strong connect with Startup ecosystem and investor pool



INCUBATED STARTUP AT SPARKL



AAPKA

Funding: INR - 16,00,000/- by Startup India (SISFS)

Aapka (SP Rural India Services Pvt. Ltd.) improves healthcare and hygiene access in rural India through an intuitive app and local support. It connects villagers with doctors and essential products, ensuring affordable, transparent, and trusted care via Gram Mitras and local professionals.



NaiBra

Funding: INR - 15,00,000/- by Startup India (SISFS)

"NaiBra" is an affordable, reusable breast patch for quick at-home screening. In one minute, it creates a personalized breast health profile and alerts you to abnormalities via your phone. Using non-invasive technology and ML, it tracks changes over time and provides insights through a companion app for early detection.



ColpAI

Funding: INR - 8,00,000/- by Meity GENESIS EIR

"ColpAI" enables early detection of cervical cancer using smartphone-based imaging and AI. It offers rapid, low-cost screening, reduces dependence on bulky devices, and empowers frontline health workers, making preventive care more accessible in underserved regions.

At GLA University, innovation is not limited to classrooms. It is built, tested, refined, and scaled right on campus.



CSED LEADING INDUSTRY 4.0

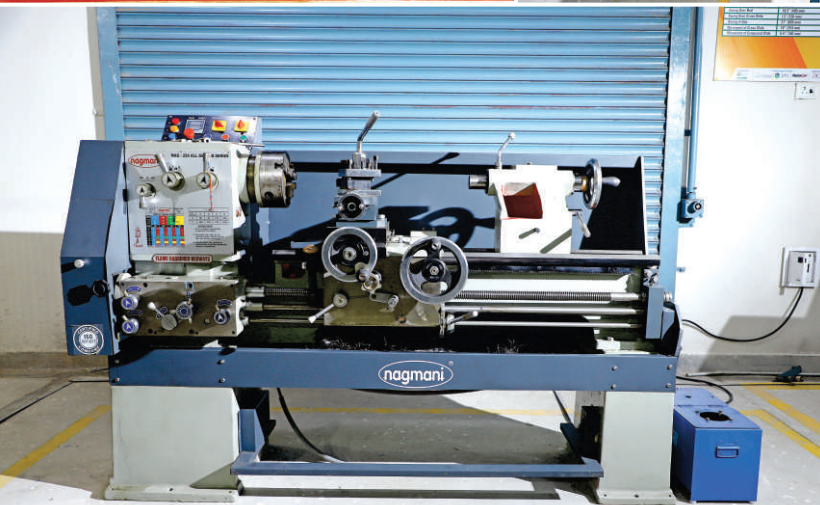
Empowering Engineers for the 4.0 Revolution

HIGHLIGHTS:

- Immersive hands-on experience with full-scale industry equipment
- Advanced simulation and design training using licensed software from global leaders, including PTC, Dassault, and Mastercam
- Expert faculty with strong corporate backgrounds delivering niche technologies and guiding live industrial projects integrated into the curriculum

TECHNICAL STRENGTHS:

- **ThingWorx Platform:** A comprehensive end-to-end technology ecosystem crafted for Industrial IoT
- **Mastercam Inc.:** A leading computer-aided manufacturing suite enabling virtual design and part simulation
- **Dassault System:** The renowned CATIA 3D modelling software supporting cutting-edge industrial design and engineering processes



CORPORATE ADVISORY BOARD

The Corporate Advisory Board at GLA University brings academia and industry into seamless alignment, cultivating innovation, strategic collaboration, and outstanding career advancement for our students.



Ms. Raksha Agrawal

Director & Head - Talent Acquisition
Sap Labs India Pvt. Ltd.



Mr. Mukesh Jain

Chief Technical Officer
Capgemini Consulting India (P) Ltd



Mr. Neerendra Upadhyay

Chief Executive Officer
Npi Inc. Japan



Dr. Pramod Joshi

Co-founder & Director
The Winning Mantra



Mr. Nagesh Marwaha

President - Corporate Affairs
Auto Ignition Ltd.
(Auto-Lek & Auto Lek Electric)



Mr. M. A. Baraiya

President -HR & Admin
Kalpataru Power Transmission Ltd



Mr. Sanjeev Tripathi

Head - Human Resource
Osram Lighting Pvt. Ltd.



Ms. Madhavi Golash

Vice President - HR
Lohia Starlinger Limited



Mr. Anupam Roop Rai

Chief Human Resource Officer
Sterling Tools Limited



Mr. Prabhanjan Kr. Prason

Senior Director
Birla Soft Ltd.



Mr. Himanshu Agrawal

Head HR
Om Logistics Ltd. (Om Group)



Dr. C. Jayakumar

Vice President & Head Corporate HR
Larsen & Toubro Ecc (Construction) Ltd.



Mr. Vinay Pradhan

CHRO
ATS Infrastructures Ltd.



Mr. Sudeep Luthra

CHRO
Kent RO Systems



Dr. Sudhanshu Pathak

Vice President - Human Resource
Jk Tyre & Industries Ltd.



Mr. C. N. Mahantesh

Senior Director-Human Resource
Cyient Ltd.

and many more...



Code < > perience Center

Powered by



At GLA University Mathura, the Capgemini Code Xperience Center offers students an unparalleled platform to master cutting-edge IT skills. This advanced facility provides hands-on exposure to real-world technologies, fostering innovation, problem-solving, and coding excellence. Beyond technical training, the centre bridges students to professional opportunities, equipping them to thrive in the dynamic IT industry and emerge as future-ready leaders in technology.

INNOVATION

WITHOUT LIMITS

At GLA University, innovation lies at the heart of our academic philosophy, shaping a vibrant, research-oriented learning ecosystem. Through a thoughtfully blended approach to education, students are prepared to meet industry expectations with confidence and creativity. Every GLAdiator is encouraged to explore, experiment, and translate original ideas into meaningful innovations, ensuring learning extends far beyond the classroom.



ALL-TERRAIN VEHICLE (ATV)



Commonly referred to as a quad or quadbike, an All-Terrain Vehicle is engineered to operate efficiently across diverse landscapes, aided by low tyre pressure. At GLA University, mechanical engineering students

successfully developed a fully equipped ATV, adhering to the standards prescribed by the American National Standards Institute (ANSI).

GO KARTING VEHICLE



The Go Karting Vehicle developed by GLA University students is a high-performance electric kart that reflects innovative engineering and modern design. With a lightweight frame, responsive steering,

and a robust electric motor, it delivers an exciting yet environmentally responsible racing experience.

RC (RADIO-CONTROLLED) PLANE



A radio-controlled aircraft is a compact flying machine operated remotely using a hand-held transmitter. At GLA University, students designed and assembled an RC Plane incorporating essential components such as a

brushless motor, ESC, servos, propeller, transmitter and receiver, and battery systems.

DESIGNING THE ATV



Within the dynamic workshop spaces at GLA University, students engage deeply in the creation of an All-Terrain Vehicle. Surrounded by tools, technical discussions, and hands-on experimentation, they carefully assemble

components, test design concepts, and reimagine solutions to navigate demanding terrains.

GLA University stands as a research-driven institution, committed to immersive learning through hands-on experiences and project-centric pedagogy. Our advanced research ecosystem is powered by cutting-edge technology and world-class infrastructure. The faculty and research community at GLA have successfully executed numerous government-funded research projects. Over the past four years, the University has invested ₹32 crore in research initiatives. Government bodies have sanctioned ₹27 crore towards our research endeavours, while non-government sectors have contributed ₹159.50 lakh over the last five years. The h-index, a globally recognised measure of research impact and productivity, reflects scholarly excellence, with GLA proudly achieving an h-index of 88.

PIONEERING RESEARCH WITH GREAT IMPACT



OUR RESEARCH CENTRES

- Solar Energy Research Centre
- Innovation & Entrepreneurship Development Centre
- Centre for Vaccines and Diagnostic Research
- Micro-Nano Development Research Centre (MNDRC)
- Bentley Centre of Excellence & BIM Advancement Centre
- Sustainable Environment and Agricultural Research Centre
- Advanced Construction Engineering Research Centre
- Centre for Computer Vision and Intelligent Systems (CVIS)
- LabVIEW Academy
- Texas Instruments Innovation Centre
- Centre for Cow Science & Research
- IPR Sophisticated Analytical Instrument Facility
- Centre for Cosmology
- Centre for Astrophysics and Space Science (CCASS)

14
Research Centres

12500+
Publications

900+
Patents Published

100+
Patents Granted

₹27 Cr.+
Sanctioned Research
Funding





Hon'ble CM of UP,
Yogi Adityanath Ji
was the Chief Guest at the
11th Convocation Ceremony

Padma Shri
Prof. HC Verma
Legendary Physicist
and Author



**Dhirendra
Krishna Shastri**
(Bhageshwar Baba)
Spiritual Guru

WHEN GREAT MINDS GRACE OUR CAMPUS



Dr. Ajit Kumar Mohanty
Chairman,
Atomic Energy Commission (AEC)
& Secretary to Govt. of India
Department of Atomic Energy (DAE)



GLA University is privileged to welcome eminent global thinkers and distinguished leaders whose presence enriches the academic landscape. Through their wisdom, experience, and inspiring journeys, they enlighten young minds and instil values that extend beyond the classroom. Such interactions create moments of reflection, aspiration, and learning, empowering students to think deeply, act responsibly, and pursue excellence with purpose.



Prof. Anil Sahasrabudhe
Chairman of the National Educational Technology Forum (NETF),
National Board of Accreditation (NBA), and
Executive Committee National Assessment and Accreditation Council (NAAC)

**Chetan
Bhagat**
Indian Author,
Columnist, and
Screenwriter

Salim-Sulaiman
Indian Composer Duo and
Playback Singers



INSPIRATION *Complements* EDUCATION **TEDxGLAU** *A stage for ideas that inspire and transform*

TEDxGLAU is a thoughtfully curated, self-organised platform that brings together distinguished voices from diverse walks of life to share powerful ideas worth spreading. Through engaging TED-style talks, renowned personalities offer insights that challenge perspectives, spark ambition, and encourage purposeful growth. These experiences go beyond academic learning, motivating students to shape both their professional journeys and personal values with confidence and clarity.



**Harpal Singh
Sokhi**
Celebrity Chef &
Television Host



**Ashish
Vidyarthi**
National Award-Winning Actor,
Motivational Speaker & Thought Leader



**Anveshi
Jain**
Actress, Motivational Speaker
& Digital Creator



**Indresh
Upadhyay**
Spiritual Orator



**Rakshit
Tandon**
Director, A&R Info Security Solutions
Pvt. Ltd. | Cyber Security Expert



**Aseem
Trivedi**
Political Cartoonist, Free Speech Activist,
& Bigg Boss 6 Contestant



**Shams
Aalam**
Paralympic Swimmer



TEDxGLAU

CENTRAL LIBRARY



GLA University's Central Library is a vibrant knowledge hub supporting teaching and research. With over 1,90,000 print volumes, extensive digital resources, and 1,200+ seating capacity, it serves students across disciplines through a strong network of institute and departmental libraries.

GD SUBWAY

The GLA University campus features GD Subway, a vibrant convenience and lifestyle hub offering stationery, fresh fruits, salon services, snacks, merchandise, a play zone, and daily essentials under one roof. Complemented by multiple chill-out spaces, it also serves a diverse range of North Indian, South Indian, Chinese, and Mexican cuisines.



SPORTS

GLA University offers a vibrant sporting ecosystem spread across a 20-acre arena, designed to inspire excellence, resilience, and teamwork. Equipped with world-class indoor and outdoor facilities, the campus encourages students to engage in diverse sports that promote physical fitness, discipline, and confidence. Sports at GLA University play a vital role in holistic development, nurturing leadership qualities and a competitive spirit that extends well beyond the playing field.

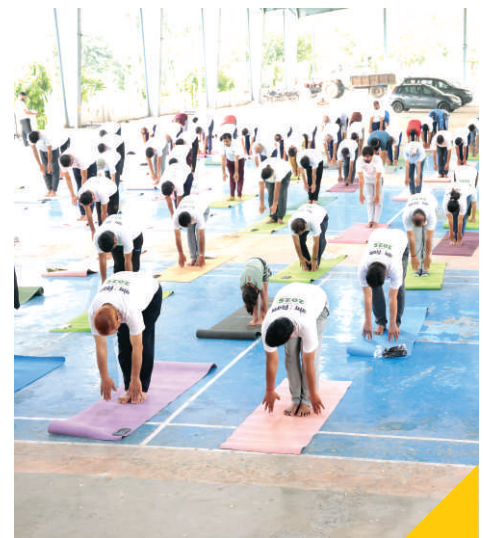


GYMNASIUM

At GLA University, physical well-being is integral to student life. The fully equipped gym features modern fitness and strength-training equipment, enabling students to build endurance, strength, and stamina under expert guidance in a motivating environment.

YOGA AND MEDITATION CENTRE

The Yoga and Meditation Centre offers a serene space for mindfulness and inner balance. Guided by experienced instructors, students engage in practices that promote mental clarity, relaxation, and holistic well-being.



AAROGYAM

Aarogyam, the University's 24x7 healthcare facility, ensures comprehensive medical care under the supervision of experienced doctors. Equipped with inpatient beds, outpatient services, and essential medical infrastructure, the centre is supported by on-campus ambulance services to respond swiftly to medical emergencies.

LABORATORIES

GLA University offers 157 state-of-the-art laboratories that form the backbone of its experiential learning ecosystem. Designed to spark inquiry and innovation, these advanced facilities enable students to apply theoretical concepts through hands-on practice. In addition to discipline-specific laboratories, the University provides collaborative and industry-integrated setups, reinforcing its commitment to applied learning and research excellence.



CLASSROOMS

With over 227 contemporary classrooms, GLA University ensures an engaging academic environment. Designed in an amphitheatre style, these fully air-conditioned spaces allow seamless interaction and clear visibility for all learners. Equipped with Wi-Fi, projectors, and advanced audio-visual systems, including 65 dedicated tutorial rooms, the classrooms support a technology-enabled and immersive learning experience.



AUDITORIUMS

The University's modern auditoriums offer an elegant platform for academic discourse, cultural celebrations, and large-scale events. Featuring advanced acoustics, sophisticated technology, and comfortable seating, these venues create an inspiring atmosphere that enhances both intellectual and cultural engagement.



HOSTELS

GLA University reimagines campus living through 19 thoughtfully designed, world-class hostels that prioritise comfort, safety, and convenience. A newly constructed 800-room hostel has been recognised among the 'Best 11 Architecture Designs' by the World Architecture Community, UK. Together, the hostels reflect architectural excellence, modern amenities, and a nurturing environment that truly feels like home.

GLA UNIVERSITY THE SOCIAL SOUL of ACADEMIC EXCELLENCE



*Education is the foundation of a meaningful life.
It has the power to uplift communities, shape values,
and drive lasting social change.*

PRAYAAS

Prayaas is a community-driven initiative aimed at supporting school students and teachers. Through health awareness camps, motivational sessions, and educational activities, the programme works towards building informed and confident young minds.

NATIONAL SERVICE SCHEME CELL

The National Service Scheme Cell at GLA University regularly organises outreach activities to create awareness on pressing social concerns such as child abuse, illiteracy, alcoholism, and corruption, encouraging responsible citizenship among students.

SHIKSHA KAYA-KALP

Beyond teaching and research, education must reach the grassroots. Under the Shiksha Kaya-Kalp initiative, GLA University, Mathura, has adopted five Government Primary Schools in nearby rural areas to support academic development and holistic growth:

- Upper Primary School Ajhai First
- Upper Primary School Jait Second
- Primary School Ajhai Second
- Primary School Ajhai Kalan
- Nagar Nigam Balika Inter College Kosi Kalan

UJJWAL BRAJ

With active student participation, GLA University undertakes regular cleanliness drives in areas around Goverdhan Hill, promoting environmental responsibility and respect for sacred spaces.

AASHAYEIN

Aashayein is centred on addressing poverty and social inequality. The initiative recognises education as both the pathway and the purpose of building a better and more equitable society.

UDAAN

UDAAN seeks to strengthen society by providing quality education to children from economically weaker families, ensuring a strong academic foundation and brighter future opportunities.

HERITAGE CONSERVATION

GLA University, Mathura, remains committed to preserving cultural heritage by contributing to the upkeep and management of historic buildings, water bodies, and heritage sites. The University has adopted the following four sites:

- Raskhan & Tajbibi Samadhi, Gokul
- Kusum Sarovar, Goverdhan
- Brahma Kund, Vrindavan
- Ramtal, Vrindavan

Through these initiatives, GLA University continues to extend learning beyond classrooms, touching lives and strengthening society.



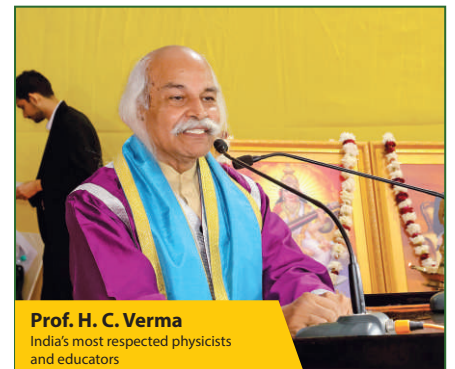
The **14th** **CONVOCATION CEREMONY**

The 14th Convocation Ceremony of GLA University was a landmark celebration, recognising the dedication and achievements of its graduating students. The event was graced by Shri Pankaj Chaudhary, Hon'ble Union Minister of State for Finance of India, as the Chief Guest. Adding further prestige were Prof. H C Verma, eminent physicist, Padma Shri awardee and author, and Shri Shivam Puri, MD & CEO of Cipla Health Ltd, as Guests of Honour. Their inspiring addresses motivated graduates to aim high and apply their knowledge for the betterment of society. The ceremony marked the dawn of a new journey, reflecting GLA University's commitment to nurturing capable, responsible, and future-ready leaders.

GLA UNIVERSITY TURNING DREAMS INTO MILESTONES!



Shri Pankaj Chaudhary
Hon'ble Minister of State
Ministry of Finance, Government of India



Prof. H. C. Verma
India's most respected physicist
and educators

and many more...

4th CONVOCATION



7th CONVOCATION



11th CONVOCATION



Spandan

The Annual Cultural Fest -2026

Spandan, GLA University's flagship two-day cultural festival, is a spectacular celebration of talent, creativity, and youthful energy. The fest comes alive with electrifying celebrity concerts, musical evenings, and laughter-filled stand-up shows, alongside a vibrant array of competitions. Students from across the country showcase their skills in dance, singing, fashion shows, drama, poetry, debates, painting, cooking, and much more, competing for exciting cash prizes, goodies, and titles. Spandan is more than a festival. It is a platform where passion meets performance, friendships are forged, and unforgettable memories are created, capturing the true spirit, enthusiasm, and cultural brilliance of GLA University.



Asees Kaur

Indian playback singer

Salim-Sulaiman

Indian Composer Duo and Playback Singers



Stand Up Comedian

SHUBHAM Pujari

TECH नव्या

A Vibrant Blend of Technology and Vision

Techनव्या, GLA University's annual two-day technical festival, transforms the campus into a hub of ideas, creativity, and experimentation. Over 20 exciting events, including Robo War, RC Racing, Line Tracing, Project Exhibitions, Shark Tank, WebX Design, Marketing Morph, Promptathon, E-Kurukshetra, Tech Walk, Agent-a-thon and Panel Discussions, bring together students from across the country to compete, collaborate, and innovate, winning cash prizes, titles, and goodies. The fest also welcomes leading industry experts and distinguished alumni, inspiring participants and offering invaluable guidance. Techनव्या is where curiosity sparks innovation and tomorrow's leaders take their first leap.



THE CAMPUS EVERYONE TALKS ABOUT



PRARAMBH

The Freshers Party

Prarambh warmly welcomes new students into university life through music, dance, drama, and creative performances. It offers a joyful platform where freshers express their talents, build friendships, and begin their GLA journey with confidence, excitement, and unforgettable moments.

DJ X DANDIYA NIGHT

Dandiya Night

DJ X Dandiya Night blends colourful traditions with energetic DJ beats, turning the campus into a vibrant dance celebration. With dandiya sticks, music, laughter, and glowing lights, students come together each year to enjoy rhythm, culture, and pure festive joy.



SRIJAN

National Inter School Competition

Srijan brings together over 3,500 school students from across Uttar Pradesh to compete in sports, cultural activities, model making, presentations, and creative events. It encourages teamwork, confidence, and learning while celebrating young talent in a lively atmosphere.

MAITREE

Annual National Level Sports Meet

Maitree is a national sports festival where college students from across the country compete with passion and sportsmanship. The event promotes fitness, teamwork, and discipline while creating an energetic campus environment filled with encouragement, unity, and competitive spirit.





PARV

The Annual Holi Milan Samaroh

Parv is a joyful Holi celebration that fills the campus with colours, music, and togetherness. Students and faculty share festive moments, laughter, and warmth, strengthening bonds and celebrating cultural traditions in a cheerful and welcoming atmosphere every year.

DEVIATHON

National-Level Hackathon Challenge

Deviathon is a 48-hour national-level hackathon where students from across the country collaborate to build innovative digital solutions. With continuous coding, teamwork, and creativity, the event sharpens technical skills and encourages practical problem-solving in real time.



LEADERSHIP SUMMIT

Annual Leadership Summit

The Annual Leadership Summit connects students with experienced professionals and industry leaders from across the country. Through inspiring talks and real world insights, learners gain career guidance, motivation, and opportunities to interact directly with leaders shaping various sectors.



SEMICON SUMMIT

Semicon Summit

The Semicon Summit brings semiconductor and VLSI experts together to guide students about emerging technologies and future careers. With interactive sessions and industry insights, the event prepares learners for opportunities in India's fast-growing electronics and innovation sector.



GLadiators RISING NATIONALLY

At GLA University, our students continue to shine across the country, bringing pride to the University through innovation, talent, leadership, and remarkable achievements in diverse fields.

1 HACKATHON VICTORY SQUAD Team CodeViberz



Priyanshu Singh, Dhriti Tandon, Shivi Kaushik, Vikas Saraswat, Sejal Rawat, Chandan Dwivedi

Secured first position at the Hack with Uttar Pradesh Hackathon, winning a ₹1,50,000 cash prize and achievement certificates.

₹1,50,000 cash prize

2 HACKATHON VICTORY SQUAD Team CodeViberz



Pragati Varshney, Piyush Kumar, Garima Mittal, Nitin Kumar, Manasvi Singhal, Nitin Sikarwar

Won Smart India Hackathon 2025 in the Hardware Category, securing a ₹50,000 cash prize and national recognition certificates.

₹50,000 cash prize

3 NATIONAL BEAUTY TRIUMPH



Kajal Kukreja

Won the KFL Miss India 2025 title in the national capital, earning honours, certificates, and celebration hampers.

4 INDIA'S ICONIC POET



Siddhant Jain

Honoured as the Indian Iconic Poet 2025 in New Delhi, receiving a cash award, grand trophy, certificates, and hampers.

5 STRENGTH ON THE NATIONAL STAGE



GLA Powerlifters

Won Gold and Bronze Medals in Powerlifting at IIT BHU, demonstrating exceptional strength, discipline, and national level excellence for GLA University.

6 SILVER ON THE NATIONAL COURT



GLA Basketball Team

Secured Second Position at a National Level Basketball Championship, earning Silver Medals through outstanding teamwork, determination, and competitive performance.



SAFE. SUPPORTIVE.

RAGGING-FREE. ALWAYS AT GLA.

At GLA University, every student deserves to feel safe, respected, and confident from the very first day on campus. That's why we follow a Zero Tolerance Policy towards ragging in all its forms across the University campus, hostels, and the Off-Campus Centre at Greater Noida.

Ragging is not just harmful; it is illegal. As per the guidelines of the University Grants Commission and the directions of the Supreme Court of India, any act of physical or mental harassment, bullying, teasing, or discrimination based on caste, religion, gender, or background is treated as a serious offence. Students found guilty may face strict disciplinary action, including suspension, expulsion, cancellation of admission, and even legal proceedings.

To ensure a peaceful and welcoming environment, the University has set up:

- **An Anti-Ragging Committee**
- **An Anti-Ragging Squad**
- **A dedicated Mentoring Cell**

These teams actively monitor the campus and act promptly on any concern.

Mandatory for all students and parents:

An online Anti Ragging Undertaking must be submitted at the time of admission through www.antiragging.in or www.amanmovement.org

For confidential support or reporting:

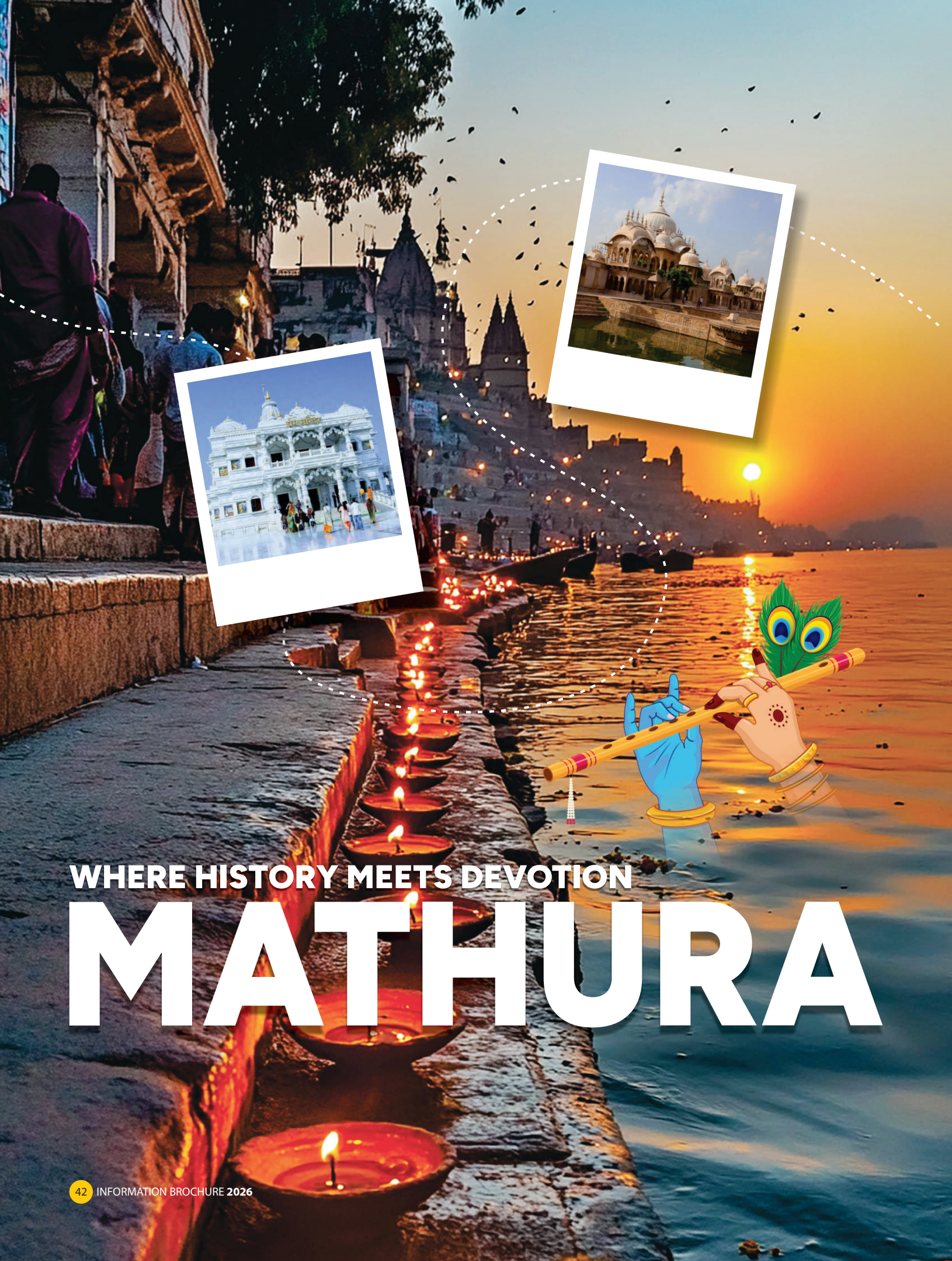
 antiragging@gla.ac.in | chiefproctor@gla.ac.in

 **UGC Helpline:** 1800 180 5522

 **GLA Helpline:** 0562 2509000 | 9068542363 | 8006069433 | 8006069434

GLA University ensures quick action, complete confidentiality, and protection for every student.

A safe campus today builds confident leaders for tomorrow.



WHERE HISTORY MEETS DEVOTION

MATHURA

DEVOTED TO Krishna DEDICATED TO Education

At GLA University, education begins in a city where history, faith, and culture beautifully come together. Nestled in Mathura, one of India's oldest and most sacred cities, the campus enjoys a peaceful setting along the banks of the Yamuna River. Once known as Madhuvan for its natural greenery and serene surroundings, Mathura is closely linked with the stories of Radha and Krishna and finds mention in the ancient epic Ramayana.

This rich blend of heritage, spirituality, and calm creates an inspiring atmosphere where students grow not just academically, but personally too.



01

SACRED TEMPLES

Mathura is home to many renowned temples reflecting its spiritual heritage. The magnificent Prem Mandir and the revered Banke Bihari Mandir are located close to the University, welcoming devotees from across the country.

03

LOCAL FLAVOURS

Mathura is famous for its traditional treats and refreshing drinks. From the soft sweetness of peda to crispy hing kachori and creamy lassi, the city's food culture adds warmth and delight to everyday life.

02

HOLY GHATS

The city is lined with sacred ghats where people gather for prayer, peace, and evening aartis. Vishram Ghat, the most significant among them, offers a serene space to experience the spiritual rhythm of Mathura.

04

LIVING CULTURE

Mathura Vrindavan's culture comes alive through devotion, music, and colourful festivals. Celebrations like Holi and Janmashtami fill the city with joy and togetherness, allowing students to experience the richness of Indian heritage firsthand.

PROGRAMMES AND FEE STRUCTURE

MATHURA CAMPUS

INSTITUTE OF ENGINEERING & TECHNOLOGY

Programme	Duration in Yrs.	1st year	2nd year	3rd year	4th year	5th year	6th year	1st Sem. Fee
B. Tech Computer Science & Engg. (CSE) (Specializations from 2nd Year) • AI & Data Science • Cybersecurity & AI • Gaming Technology • Cloud & DevOps • IoT & Robotics • Business Informatics • Full Stack Development	4	2,08,000	2,16,000	2,24,000	2,32,000			1,05,500
B. Tech Electronics Communication Engineering (ECE)	4	1,90,000	1,95,000	2,00,000	2,05,000			96,500
B. Tech ECE (with Minor in CS)	4	1,90,000	1,95,000	2,00,000	2,05,000			96,500
B. Tech Electronics and Computer Engineering	4	1,90,000	1,95,000	2,00,000	2,05,000			96,500
B. Tech Mechanical Engineering (ME)	4	1,90,000	1,95,000	2,00,000	2,05,000			96,500
B. Tech ME (With Specialization in Automobile)	4	1,90,000	1,95,000	2,00,000	2,05,000			96,500
B. Tech ME (With Specialization in Mechatronics)	4	1,90,000	1,95,000	2,00,000	2,05,000			96,500
B. Tech ME (With Minor in CS)	4	1,90,000	1,95,000	2,00,000	2,05,000			96,500
B. Tech Civil Engineering (CE)	4	1,90,000	1,95,000	2,00,000	2,05,000			96,500
B. Tech Electrical Engineering (EE)	4	1,90,000	1,95,000	2,00,000	2,05,000			96,500
B. Tech EE (With Minor in CS)	4	1,90,000	1,95,000	2,00,000	2,05,000			96,500
B. Tech EE (Specialization in Electric Vehicle Technology)	4	1,90,000	1,95,000	2,00,000	2,05,000			96,500
B. Tech ECE with specialization in VLSI	4	1,90,000	1,95,000	2,00,000	2,05,000			96,500
Eligibility	*Passed 10+2 examination with Physics and Mathematics as compulsory subjects along with Chemistry / Computer Science. with at least 50% marks in the above subjects, taken together and 50% marks overall + *On the basis of performance in GLAET (An online MCQ test of 120 minutes)							
B. Tech (Hons.) CSE-AI and Analytics in collaboration with intel NEC	4	2,45,000	2,50,000	2,55,000	2,60,000			1,24,000
Eligibility	*Passed 10+2 examination with Physics and Mathematics as compulsory subjects along with English / Computer Science . with at least 75% marks in the above subjects, taken together and 75% marks overall + *On the basis of performance in GLAET (An online MCQ test of 120 minutes).							
B. Tech CSE-AIML	4	2,45,000	2,50,000	2,55,000	2,60,000			1,24,000
Eligibility	*Passed 10+2 examination with Physics and Mathematics as compulsory subjects along with English / Computer Science. with at least 65% marks in the above subjects, taken together and 50% marks overall + *On the basis of performance in GLAET (An online MCQ test of 120 minutes).							
BCA	3	1,15,000	1,20,000	1,25,000				59,000
BCA (Hons./By Research)	4	1,15,000	1,20,000	1,25,000	1,30,000			59,000
BCA with Specialization in Digital Marketing (AEDP)	3	1,15,000	1,20,000	1,25,000				59,000
BCA (Hons./By Research) with Specialization in Digital Marketing (AEDP)	4	1,15,000	1,20,000	1,25,000	1,30,000			59,000
Eligibility	*Passed 10+2 examination with at least 50% marks in any stream *On the basis of performance in GLAET (An online MCQ test of 60 minutes).							

5% Marks Relaxation to SC/ST Category Students.

Education Loan Facility Available



INSTITUTE OF ENGINEERING & TECHNOLOGY

Programme	Duration in Yrs.	1st year	2nd year	3rd year	4th year	5th year	6th year	1st Sem. Fee
BCA with specialization in Data Science	3	1,45,000	1,50,000	1,55,000				74,000
BCA with Specialization in AIML	3	1,45,000	1,50,000	1,55,000				74,000
BCA (Hons./By Research) with Specialization in AIML	4	1,45,000	1,50,000	1,55,000	1,60,000			74,000
Eligibility	*Passed 10+2 examination with mathematics at least 60% marks *On the basis of performance in GLAET (An online MCQ test of 60 minutes).							
B. Tech Lateral Entry • Computer Science & Engineering	3		2,08,000	2,16,000	2,24,000			
B. Tech Lateral Entry • Civil Engineering • Electrical Engineering • Electronics and Communication Engineering • Mechanical Engineering • Electronics and Computer Engineering • ECE (Specialization in VLSI) • ECE (With Minor in CSE) • EE (Specialization in EV Technology)	3		1,90,000	1,95,000	2,00,000			
Eligibility	*Passed a minimum three-year or two-year (Lateral Entry) Diploma examination with at least 50% marks, ANY branch of Engineering and Technology, recognized by the Board of Technical Education/University. Or B Sc (PCM) with minimum 60% marks. Or B.Tech 1st Year in the available stream with a minimum of 60% marks, subject to approval from the Equivalence Committee for admission from an external university/college. *On the basis of performance in GLAET (An online MCQ test of 60 minutes)							
M. Tech Computer Science & Engineering	2	1,77,000	1,78,000					90,000
Eligibility	*First Division in BE/B. Tech. or equivalent in Computer Science and Engineering / Information Technology / Electronics Engineering / Electronics and Communication / Engineering Electronics and Telecommunication Engineering / Telecommunication Engineering / Electronics and Instrumentation Engineering / Electrical & Electronics Engineering / Electrical Engineering or any combinations of these disciplines given mentioned, MCA and MSc in Maths, CS/ IT, Stats and allied streams. *On the basis of performance in GLAET (An online MCQ test of 60 minutes).							
M. Tech CE (Structural Engineering)	2	1,77,000	1,78,000					90,000
M. Tech CE (Transportation Engineering)	2	1,77,000	1,78,000					90,000
M. Tech Electrical Engineering	2	1,77,000	1,78,000					90,000
M. Tech Electronics and Comm. Engineering	2	1,77,000	1,78,000					90,000
M. Tech Energy System	2	1,77,000	1,78,000					90,000
M. Tech ME (Fluid & Thermal Sciences)	2	1,77,000	1,78,000					90,000
M. Tech ME (Production)	2	1,77,000	1,78,000					90,000
M. Tech ME (Design)	2	1,77,000	1,78,000					90,000
Eligibility	*First Division in B Tech in the relevant branch or For Energy Systems, (First Division in B Tech in EE, EN, EC, ME or M Sc Physics.) *On the basis of performance in GLAET (An online MCQ test of 60 minutes).							
MCA	2	1,53,000	1,58,000					78,000
Eligibility	*Passed Recognized Bachelor's Degree of minimum 3 Yrs duration with Mathematics as a compulsory subject at 10+2 level or at graduate level. With at least 50% Marks *On the basis of performance in GLAET (An online MCQ test of 90 minutes).							
MCA (Artificial intelligence & Machine Learning)	2	1,65,000	1,75,000					84,000
Eligibility	*Passed B.Sc. (Computer Science) Or BCA with at least 60% Marks *On the basis of performance in GLAET (An online MCQ test of 90 minutes).							
Ph.D. (EE, ME, ECE, CE, CSE, CA)	3	80,000	80,000	80,000				40,000
Eligibility	*Passed Master's degree (Appropriate discipline/field/subject) with at least 60% Marks *On the basis of performance in GLAET (An online MCQ test of 90 minutes)							

Education Loan Facility Available

5% Marks Relaxation to SC/ST Category Students.

INSTITUTE OF BUSINESS MANAGEMENT

Programme	Duration in Yrs.	1st year	2nd year	3rd year	4th year	5th year	6th year	
BBA • Human Resource • Marketing, Finance, • Logistics and Supply Chain Management • Entrepreneurship & Family Business	3	1,15,000	1,20,000	1,25,000				59,000
BBA (Hons./By Research) • Human Resource • Marketing, Finance, • Logistics and Supply Chain Management • Entrepreneurship & Family Business	4	1,15,000	1,20,000	1,25,000	1,30,000			59,000
BBA Family Business	3	1,45,000	1,50,000	1,55,000				74,000
Eligibility	*Passed 10+2 examination with at least 50% marks in any stream *On the basis of performance in GLAET (An online MCQ test of 60 minutes).							
BBA Management Sciences	3	1,45,000	1,50,000	1,55,000				74,000
Eligibility	*Passed 10+2 examination with at least 60% marks in any stream *On the basis of performance in GLAET (An online MCQ test of 60 minutes).							
BBA Data Analytics & Business Intelligence	3	1,50,000	1,55,000	1,60,000				76,500
BBA (Hons./By Research) Data Analytics & Business Intelligence	4	1,50,000	1,55,000	1,60,000	1,65,000			76,500
Eligibility	*Passed 10+2 examination with mathematics/Statistics at least 60% marks *On the basis of performance in GLAET (An online MCQ test of 60 minutes).							
MBADual Specialization (any 2 to be selected) • Business Analytics • Digital Marketing • Marketing • Human Resource • Financial Management • International Business Management • Operations Management • Supply Chain Management	2	2,45,000	2,55,000					1,24,000
Eligibility	*Passed Recognized Bachelor's Degree of Minimum 3 Yrs duration. With at least 50% Marks *On the basis of performance in GLAET (An online MCQ test of 90 minutes) Preference will be given to high scorers of CAT, MAT, XAT, UPSEE etc.							
MBA (Financial Markets & Banking) in collaboration with AAFM 	2	2,85,000	2,95,000					1,44,000
MBA - Logistics and Supply Chain Management in Academic collaboration with 	2	2,80,000	2,90,000					1,41,500
Eligibility	*Passed Recognized Bachelor's Degree of minimum 3 Yrs duration. With at least 50% Marks *On the basis of performance in GLAET (An online MCQ test of 90 minutes) followed by GD & PI. Preference will be given to high scorers of CAT, MAT, XAT, UPSEE etc.							
MBA (Hons.) Dual Specialization (Any 2 to be selected) • Business Analytics • Digital Marketing Marketing • Human Resource • Financial Management • International Business Management • Operations Management • Supply Chain Management	2	2,90,000	3,00,000					1,46,500
MBA- Business Analytics Specialized program with focus on application of analytics in different business domains (Power BI, Tableau, R-Programming, Python, Analytics, Advance Excel, and other relevant analytical techniques)	2	2,80,000	2,90,000					1,41,500
Eligibility	*Passed Recognized Bachelor's Degree of Minimum 3 Yrs duration. With at least 60% Marks *On the basis of performance in GLAET (An online MCQ test of 90 minutes) followed by GD & PI. Preference will be given to high scorers of CAT, MAT, XAT, UPSEE etc.							
Ph.D in Management	3	1,00,000	1,00,000	1,00,000				50,000
Eligibility	*Passed Master's degree (Appropriate discipline/field/subject) with at least 55% Marks *On the basis of performance in GLAET (An online MCQ test of 60 minutes)							

5% Marks Relaxation to SC/ST Category Students.

Education Loan Facility Available

FACULTY OF EDUCATION

Programme	Duration in Yrs.	1st year	2nd year	3rd year	4th year	5th year	6th year	1st Sem. Fee
B.Ed	2	53,000	53,000					28,000
Eligibility	*At least 50% marks either in the Bachelor's Degree and/or Master's Degree in Sciences / Social Sciences/ Humanity OR Bachelor's in Engineering or Technology with at least 55% marks *On the basis of performance in GLAET (An online MCQ test of 60 minutes).							
ITEP (B.Sc. B.Ed.) Integrated Teacher Education Programme.	4	35,000	35,000	35,000	35,000			19,000
Eligibility	*Passed 10+2 examination with science at least 50% marks *On the basis of performance in GLAET (An online MCQ test of 60 minutes).							
Ph.D in Education	3	80,000	80,000	80,000				40,000
Eligibility	*Passed Master's degree (Appropriate discipline/field/subject) with at least 55% Marks *On the basis of performance in GLAET (An online MCQ test of 60 minutes)							

INSTITUTE OF LEGAL STUDIES AND RESEARCH

B. A. LLB (Hons.)	5	1,45,000	1,50,000	1,55,000	1,60,000	1,65,000		74,000
BBA LLB (Hons.)	5	1,45,000	1,50,000	1,55,000	1,60,000	1,65,000		74,000
Eligibility	*Passed 10+2 examination with at least 50% marks in any stream *On the basis of performance in GLAET (An online MCQ test of 60 minutes).							
LLM • Banking, Finance, and Insurance Law • Cyber and Data Privacy Law	1	1,55,000						79,000
Eligibility	*Passed 3-year LL. B or Five-Year Integrated LL.B or an equivalent degree from a recognized University with at least 50% marks. *On the basis of performance in GLAET (An online MCQ test of 60 minutes).							
Ph.D in Law	3	1,00,000	1,00,000	1,00,000				50,000
Eligibility	*Passed Master's degree (Appropriate discipline/field/subject) with at least 55% Marks *On the basis of performance in GLAET (An online MCQ test of 60 minutes)							

INSTITUTE OF PHARMACEUTICAL RESEARCH

B. Pharm	4	1,56,000	1,61,000	1,66,000	1,71,000			79,500
Eligibility	*Passed 10+2 examination with Physics and Chemistry as compulsory subjects along with Mathematics / Biology. With at least 50% marks in the above subjects, taken together and 50% marks overall (Candidate must attain the age of 17 years on 31.12.2026) *On the basis of performance in GLAET (An online MCQ test of 90 minutes)							
B. Pharm Lateral Entry	3		1,61,000	1,66,000	1,71,000			
Eligibility	*Passed Diploma in Pharmacy from a PCI approved Institution, with at least 60% marks. (Candidate must attain the age of 18 years on 31.12.2026) *On the basis of performance in GLAET (An online MCQ test of 60 minutes)							
M. Pharm • Pharmacology • Pharmaceutics	2	1,77,000	1,78,000					90,000
Eligibility	*First Division in B Pharm *On the basis of performance in GLAET (An online MCQ test of 60 minutes)							
D. Pharm	2	1,14,000	1,19,000					58,500
Eligibility	*Passed 10+2 examination with PCB / PCM with at least 50% marks. (Candidate must have attained the age of 17 years on 31.12.2026) *On the basis of performance in 12th % PI							

Education Loan Facility Available

5% Marks Relaxation to SC/ST Category Students.

INSTITUTE OF PHARMACEUTICAL RESEARCH

Programme	Duration in Yrs.	1st year	2nd year	3rd year	4th year	5th year	6th year	1st Sem. Fee
Ph.D. in Pharmacy (Pharmacology, Pharmaceutical Chemistry & Pharmaceutics)	3	1,00,000	1,00,000	1,00,000				50,000
Eligibility	*Passed Master's degree (Appropriate discipline/field/subject) with at least 60% Marks *On the basis of performance in GLAET (An online MCQ test of 60 minutes)							

INSTITUTE OF APPLIED SCIENCES & HUMANITIES

B. Sc. Physics	3	45,000	46,000	47,000				24,000
B. Sc. Physics (Hons./By Research)	4	45,000	46,000	47,000	48,000			24,000
Eligibility	*Passed 10+2 examination with Physics with at least 50% marks *On the basis of performance in GLAET (An online MCQ test of 60 minutes).							
B. Sc. Chemistry	3	45,000	46,000	47,000				24,000
B. Sc. Chemistry (Hons./By Research)	4	45,000	46,000	47,000	48,000			24,000
Eligibility	*Passed 10+2 examination with Chemistry with at least 50% marks *On the basis of performance in GLAET (An online MCQ test of 60 minutes).							
B. Sc. Mathematics with Specialization in Data Science	3	45,000	46,000	47,000				24,000
B. Sc. Mathematics (Honours/by Research) with Specialization in Data Science	4	45,000	46,000	47,000	48,000			24,000
Eligibility	*Passed 10+2 examination with Mathematics with at least 50% marks *On the basis of performance in GLAET (An online MCQ test of 60 minutes).							
B. A. English	3	45,000	46,000	47,000				24,000
B. A. English (Hons./By Research)	4	45,000	46,000	47,000	48,000			24,000
Eligibility	*Passed 10+2 examination with at least 50% marks in any stream *On the basis of performance in GLAET (An online MCQ test of 60 minutes).							
B. Sc. (Hons.) Agriculture	4	83,000	85,000	87,000	89,000			43,000
Eligibility	*Passed 10+2 examination with Physics, Chemistry & Biology/ Maths /Agriculture or Two years Diploma in Agriculture with at least 50% marks *On the basis of performance in GLAET (An online MCQ test of 60 minutes) followed by GD & PI.							
B. A. Economics	3	45,000	46,000	47,000				24,000
B. A. Economics (Hons./By Research)	4	45,000	46,000	47,000	48,000			24,000
<i>BA Economics/ BA Economics (Hons./ By Research) Specializations: International Economics • Development Economics • Business Admin. & Law • Industrial Economics • Banking & Finance • Behaviourial Economics • International Economics • Development Economics • Business Admin. & Law • Industrial Economics • Banking & Finance • Behaviourial Economics</i>								
B. Com.	3	1,15,000	1,20,000	1,25,000				59,000
B. Com. (Hons/ By Research)	4	1,15,000	1,20,000	1,25,000	1,30,000			59,000
<i>B. Com./B. Com. (Hons/ By Research) Specializations: Accounting and Finance • International Business • Applied Business Econ. • Banking & Insurance • Business Admin & Law</i>								
Eligibility	*Passed 10+2 examination with at least 50% marks in any stream *On the basis of performance in GLAET (An online MCQ test of 60 minutes).							
B. Sc. Biotechnology	3	1,10,000	1,15,000	1,20,000				56,500
B. Sc. Biotechnology (Hons./By Research)	4	1,10,000	1,15,000	1,20,000	1,25,000			56,500
Eligibility	*Passed 10+2 examination with Physics, Chemistry & Biology/ Maths / Biotechnology with at least 50% marks *On the basis of performance in GLAET (An online MCQ test of 60 minutes).							
MA English	2	49,000	50,000					26,000
Eligibility	*Passed Recognized Bachelor's Degree of Minimum 3 Yrs duration. With at least 50% Marks *On the basis of performance in GLAET (An online MCQ test of 60 minutes).							

5% Marks Relaxation to SC/ST Category Students.

Education Loan Facility Available

INSTITUTE OF APPLIED SCIENCES & HUMANITIES

Programme	Duration in Yrs.	1st year	2nd year	3rd year	4th year	5th year	6th year	1st Sem. Fee
B. Tech Biotechnology	4	1,90,000	1,95,000	2,00,000	2,05,000			96,500
Eligibility	*Passed 10+2 examination with Chemistry and Mathematics/Biology as compulsory subjects along with Physics/Computer science With at least 50% marks in the above subjects, taken together and 50% marks overall *On the basis of performance in GLAET (An online MCQ test of 120 minutes).							
B. Tech Lateral Entry • Biotechnology	3		1,90,000	1,95,000	2,00,000			
Eligibility	*Passed a minimum three-year or two-year (Lateral Entry) Diploma examination with at least 50% marks, Relevant branch recognized by the Board /University Or B. Sc (PCM) with minimum 60% marks. Or B. Sc (Biotech/Microbiology/Life Science) with 60% Marks OR B. Tech 1st Year in the available stream with a minimum of 60% marks, subject to approval from the Equivalence Committee for admission from an external university/college. *On the basis of performance in GLAET (An online MCQ test of 60 minutes)							
M. Sc. Physics	2	54,000	55,000					28,500
Eligibility	*Passed B. Sc OR Equivalent Degree (with Physics) with at least 50% Marks *On the basis of performance in GLAET (An online MCQ test of 60 minutes).							
M. Sc. Chemistry	2	54,000	55,000					28,500
Eligibility	*Passed B. Sc OR Equivalent Degree (with Chemistry) with at least 50% Marks *On the basis of performance in GLAET (An online MCQ test of 60 minutes).							
M. Sc. Mathematics	2	54,000	55,000					28,500
Eligibility	*Passed B. Sc. (With Mathematics) OR Equivalent Degree (with Mathematics) with at least 50% Marks *On the basis of performance in GLAET (An online MCQ test of 60 minutes).							
M. Sc. Biotechnology	2	1,27,000	1,28,000					65,000
Eligibility	*Passed B. Sc (Biotech) OR B Sc (Life Sciences) OR B. Sc (Agriculture) OR BMLT with at least 50% marks *On the basis of performance in GLAET (An online MCQ test of 60 minutes).							
M. Sc. Microbiology & Immunology	2	1,27,000	1,28,000					65,000
Eligibility	*Passed B. Sc (Biotech)/ Microbiology OR B. Sc (Life Sciences) Or B. Sc (Agriculture) Or BMLT with at least 50% marks *On the basis of performance in GLAET (An online MCQ test of 60 minutes).							
M. Sc. Agriculture • Agronomy • Agri. Economics • Genetics and Plant Breeding • Horticulture-Fruit Science • Horticulture-Vegetable Science	2	84,000	86,000					43,500
Eligibility	*Passed B Sc OR Equivalent Degree (with Agriculture) with at least 50% Marks *On the basis of performance in GLAET (An online MCQ test of 60 minutes).							
Ph.D. in Physics, Chemistry, Mathematics, English, Astrophysics	2	80,000	80,000	80,000				40,000
Eligibility	*Passed Master's degree (Appropriate discipline/field/subject) with at least 55% Marks *On the basis of performance in GLAET(An online MCQ test of 60 minutes)							
Ph.D. in Biotechnology	2	1,00,000	1,00,000	1,00,000				50,000
Ph.D. in Microbiology	2	1,00,000	1,00,000	1,00,000				50,000
Eligibility	*Passed Master's degree (Appropriate discipline/field/subject) with at least 60% Marks *On the basis of performance in GLAET(An online MCQ test of 60 minutes)							

Education Loan Facility Available

5% Marks Relaxation to SC/ST Category Students.

INSTITUTE OF APPLIED SCIENCES & HUMANITIES

Programme	Duration in Yrs.	1st year	2nd year	3rd year	4th year	5th year	6th year	1st Sem. Fee
Ph.D. in Agriculture (Specialization in Vegetable Sciences) Agronomy, Soil Science, Plant Pathology, Horticulture, Entomology, Seed Science & Technology, Agri. Economics, Agri. Extension, Genetics and Plant Breeding	2	80,000	80,000	80,000				40,000
Eligibility	*Passed Master's degree (Appropriate discipline/field/subject) with at least 60% Marks *On the basis of performance in GLAET (An online MCQ test of 60 minutes)							

UNIVERSITY POLYTECHNIC

Diploma in Engineering • CSE • EE • ME • CE • ECE	3	67,000	68,000	69,000				35,000
Eligibility	*Passed 10th examination with at least 40% marks and Mathematics as compulsory subject *On the basis of performance in 10th % & PI							
Diploma in Engineering (Lateral Entry) • CSE • EE • ME • CE • ECE	2		67,000	68,000				35,000
Eligibility	*Passed 10+2 examination with Science at least 55% marks or ITI in appropriate field with at least 55% marks. *On the basis of performance in 12th % & PI							

HOSTEL & MESS FEE

Hostel Fee: Subject to availability of rooms as hostel rooms are limited & will be allocated on first come- first serve basis.

Type of Room	For Girls					For Boys				
	First Year	Second Year	Third Year	Fourth Year	Fifth Year	First Year	Second Year	Third Year	Fourth Year	Fifth Year
Triple Seater	71,000/-	74,000/-	77,000/-	80,000/-	83,000/-	71,000/-	NA	NA	NA	NA
Double Seater	78,000/-	81,000/-	84,000/-	87,000/-	90,000/-	NA	81,000/-	84,000/-	87,000/-	90,000/-
Single Seater	NA	NA	NA	NA	NA	83,000/-	86,000/-	89,000/-	92,000/-	95,000/-
Triple Seater (AC) Limited Seats	91,000/-	94,000/-	97,000/-	1,00,000/-	1,03,000/-	91,000/-	NA	NA	NA	NA
Double Seater (AC) Limited Seats	1,03,000/-	1,06,000/-	1,09,000/-	1,12,000/-	1,15,000/-	NA	NA	NA	NA	NA
Single Seater (AC) Limited Seats	NA	NA	NA	NA	NA	1,13,000/-	NA	NA	NA	NA
Premium Flat (Triple Seater Room)	71,000/-	74,000/-	77,000/-	80,000/-	83,000/-	NA	NA	NA	NA	NA
Premium Flat (Double Seater Room)	78,000/-	81,000/-	84,000/-	87,000/-	90,000/-	NA	NA	NA	NA	NA
Wing Single Seater (AC)	NA	NA	NA	NA	NA	NA	1,28,000/-	1,31,000/-	1,34,000/-	1,37,000/-
Wing Single Seater (Non-AC)	NA	NA	NA	NA	NA	NA	98,000/-	1,01,000/-	1,04,000/-	1,07,000/-

Hostel Security: Rs. 5000/- in the first year of the course is to be paid additional (refundable on vacating the hostel on successful completion of course).

Note: In case you want to pay Tuition Fee in two installments, you can do the same with an additional charge of **Rs. 1500 per semester**. Second installment of academic fee has to be deposited by 20th December, every year (as per the notice circulated). Above hostel fee is for current regular academic session only (i.e. 10 months). Students will be required to submit their full hostel fee by February every year for the hostel booking of next year; advance hostel booking for the next academic session is done on first come, first serve basis. Hostel will be provided for full regular academic year (i.e. 10 months) only. Students enrolled in PG courses are allowed to book only single-seated rooms (**applicable to boys only**).

Mess Charges: Rs. 40,000/- Per Annum (as advance, mess run on actual expenses basis)

5% Marks Relaxation to SC/ST Category Students.

Education Loan Facility Available

ADDITIONAL CHARGES

Caution Money (To be paid in the first year of the course, refundable on the successful completion of course)	Examination Charges	Alumni Association Fee
Rs. 5,000 (for Diploma in Engineering/D. Pharm. /B. Ed/ B. A. English/ B. A. English (Hons./By Research)/B. A. Economics/B. A. Economics (Hons. /By Research)/B. Sc. Math/ B. Sc. Math (Hons./By Research)/B. Sc. Chemistry/B. Sc. Chemistry (Hons./By Research)/ B. Sc. Physics/B. Sc. Physics (Hons./By Research)/B.Sc. (Hons.) Agriculture/ M.Sc. (Chemistry)/M.Sc. (Physics)/M.Sc. (Mathematics)/M.Sc. (Agriculture), MA English	Rs. 7,000/- (Per Academic Year, for all courses)	Rs. 1,000/- (to be paid at once in the first year of the course)
Rs. 10,000/- for all other courses		
* Option to deposit fee in two parts with Rs. 1,500 /- extra per semester		

PROGRAMMES AND FEE STRUCTURE GREATER NOIDA CAMPUS

Programme	Duration in Yrs.	1st year	2nd year	3rd year	4th year	5th year	6th year	1st Sem. Fee
B. Tech Computer Science & Engg. (CSE) (Specializations from 2nd Year) • AI & Data Science • Cybersecurity & AI • Gaming Technology • Cloud & DevOps • IoT & Robotics • Business Informatics • Full Stack Development	4	2,25,000	2,33,000	2,41,000	2,49,000			1,14,500
B. Tech Electronics Communication Engineering (ECE)	4	2,10,000	2,15,000	2,20,000	2,25,000			1,06,500
B. Tech CSE-AIML	4	2,60,000	2,68,000	2,76,000	2,84,000			1,31,500
B. Tech Lateral Entry • Computer Science & Engineering	3		2,08,000	2,16,000	2,24,000			
B. Tech Lateral Entry CSE-AIML	3		2,43,000	2,51,000	2,59,000			
BBA Management Sciences	3	1,45,000	1,50,000	1,55,000				74,000
MBA (Hons.) Dual Specialization (Any 2 to be selected) • Business Analytics • Marketing • Human Resource • Finance	2	2,85,000	2,95,000					1,44,000
MCA (Artificial intelligence & Machine Learning)	2	1,73,000	1,78,000					88,000

ADDITIONAL CHARGES

Caution Money (To be paid in the first year of the course, refundable on the successful completion of course)	Examination Charges	Alumni Association Fee
Rs. 10,000/-	Rs. 7,000/- (Per Academic Year, for all courses)	Rs. 1,000/- (to be paid at once in the first year of the course)
* Option to deposit fee in two parts with Rs. 1,500 /- extra per semester		

5% Marks Relaxation to SC/ST Category Students.

Education Loan Facility Available



TWICE THE KNOWLEDGE,
DOUBLE THE POWER

UNLEASH YOUR POTENTIAL WITH DUAL DEGREE PROGRAMS

Embark on a revolutionary academic journey with GLA University's dual degree programs, a visionary initiative under the National Education Policy 2020. Now, students can seamlessly pursue two degrees concurrently—a regular B. Tech paired with an online BBA and many more. This innovative approach empowers students to acquire expertise in both engineering and management, fostering comprehensive and future-ready skill sets. Elevate your education with GLAU's commitment to academic excellence and versatility.

Benefits of Dual Degree Programs

- A diverse skill set, combining technical expertise with managerial skills.
- Save time by completing two degrees concurrently, accelerating your career growth.
- More cost-effective than pursuing two programs separately.
- Stand out with a broader knowledge base, enhancing your competitiveness in the job market.
- A holistic understanding of various disciplines, promoting interdisciplinary knowledge.
- Tailor your education to align with your career goals.
- Expand your professional networks, opening doors to diverse career prospects.
- Combining technical and managerial expertise prepares individuals for leadership roles.
- Encourages innovative thinking, essential in solving complex real-world challenges.

Dual Degree Programs: Fee Structure (Per Annum)

Sr.No.	Primary Degree (Offline)	Fees of Primary Degree	Secondary Degree (Online)	Fees of Secondary Degree	Actual Fee of Dual Degrees	Addl. Fees for Sec. Degree (Online)
1	BBA	1,15,000	BCA(O)	29,500	1,35,500	20,500
2	BBA	1,15,000	B Com(O)	20,000	1,29,000	14,000
3	BA (English)	45,000	BBA(O)	29,500	65,500	20,500
4	BA (English)	45,000	BCA(O)	29,500	65,500	20,500
5	BA (Eco)	45,000	BBA(O)	29,500	65,500	20,500
6	BA (Eco)	45,000	BCA(O)	29,500	65,000	20,500
7	B Com	1,15,000	BBA(O)	29,500	1,35,500	20,500
8	BCA	115,000	BBA(O)	29,500	1,35,500	20,500
9	B Tech (Except CS core branch)	1,90,000	BCA(O)	29,500	2,10,500	20,500
10	B Tech (Except CS core branch)	1,90,000	BBA(O)	29,500	2,10,500	20,500
11	B Tech (CS)	2,08,000	BBA(O)	29,500	2,28,500	20,500
12	B Sc (Phy,Chem,Maths)	45,000	BBA(O)	29,500	65,500	20,500
13	B Sc (Phy,Chem,Maths)	45,000	BCA(O)	29,500	65,500	20,500
14	B Sc (AG)	83,000	BBA(O)	29,500	1,03,500	20,500
15	B Sc (AG)	83,000	BCA(O)	29,500	1,03,500	20,500
16	B Sc (Biotech)	1,10,000	BBA(O)	29,500	1,03,500	20,500
17	B Sc (Biotech)	1,10,000	BCA(O)	29,500	1,03,500	20,500
18	B Pharm	1,56,000	BBA(O)	29,500	1,76,500	20,500
19	B Pharm	1,56,000	BCA(O)	29,500	1,76,500	20,500
20	MBA	2,45,000	MCA(O)	43,000	2,75,000	30,000
21	MCA	1,53,000	MBA(O)	48,500	1,86,500	33,500

ADDITIONAL CHARGES: PRIMARY DEGREE (OFFLINE)

Caution Money	Examination Charges	Alumni Association Fee
(To be paid in the first year of the course, refundable on the successful completion of course)	(Per Academic Year, for all courses)	(to be paid at once in the first year of the course)
Rs. 5,000 (BA English/ BA Economics/ B. Sc Agriculture /B. Sc. Math/ B. Sc. Chemistry/ B. Sc. Physics)	Rs. 7,000/-	Rs. 1,000/-
Rs. 10,000/- for all other courses		

* Option to deposit fee in two parts with Rs. 1,500 /- extra per semester

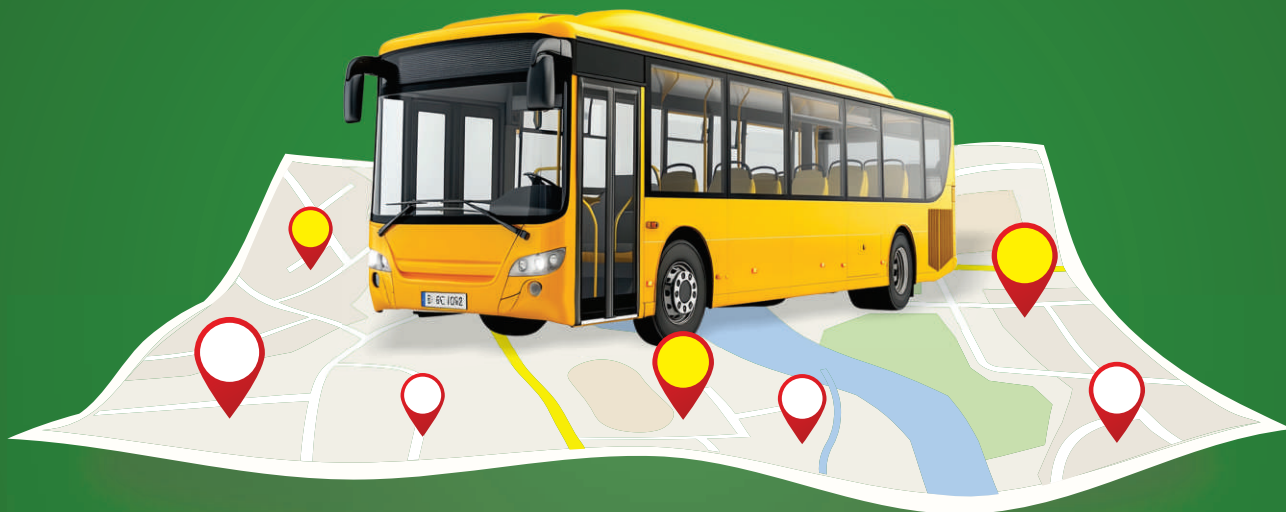
ADDITIONAL CHARGES: ADDITIONAL DEGREE (ONLINE)

Registration Fee	Examination Charges
(To be paid in the first year of the course)	(Per Semester, for all courses)
Rs. 2,000	Rs. 1,500/-

Education Loan Facility Available

BUS ROUTE

Bus Fee: The following Bus fee is for regular academic session only.



Location	Stoppage	Amount
From Mathura City	Krishnapuri, Sadar Bazar, Tank Chauraha, Dampier Nagar, Bharatpur Gate, Deeg Gate, Roopam Cinema, Masani, and Kalyanam Karoti	26,000/-
	Bajrang Dharam Kanta, Baldev Puri, Manas Nagar, Janakpuri, Shanti Nagar, New Bus Stand, Krishna Nagar, Goverdhan Chauraha, and Radha Puram	
	Old RTO, Jai Gurudev Temple, Mandi Chauraha, and Sonkh Road	
	Ganeshra, Radha Puram Estate, Radha Puram	
	Moti Kunj, Chandanvon, Dholi Pyou, Narholi Thana	
	Radha City, Shivasha State, Shri Ji Gardan	
	Laxmi Nagar (Yamuna Par), Saiyad	28,000/-
From Vrindavan	Chungi Chauraha, Atalla Chungi, Kailash Nagar, Railway Over Bridge, Chaitnanya Vihar, Hari Nikunj Chauraha, Keshav Kunj, and Iskon Temple	24,000/-
From Township & Surrounding Areas	Aurangabad Chauraha, Veterinary College, Civil Line, Police Line Township, Nawada, Balaji Puram, Sudhama Puri	28,000/-
From Kosi- Kalan	Kosi, Chhata, Akabar Pur	28,000/-
From Baldev	Baldev To GLAU	32,000/-
From Raya	Raya To GLAU	32,000/-
From Goverdhan	Goverdhan To GLAU	32,000/-
From Mant	Mant To GLAU	30,000/-
From Hodal	Hodal To GLAU	35,000/-

Bus Fee: (*Subject to revision every year) Following Bus fee is for the regular academic session only.

* UGC norms will adhere for fee refund *All the disputes are subjected to Mathura judiciary.

MERIT-BASED SCHOLARSHIPS

GLA University offers merit-cum-means scholarships in order to encourage talent and make quality education accessible to all.



1. Scholarship for Meritorious students:

For B Tech Students On the basis of PCM/B percentage: # Candidates eligible for scholarship on the basis Physics, Chemistry & Mathematics percentage at 10+2 level as mentioned below:

PCM Percentage	Scholarship amount
95-100	75,000/-
90-94.99	50,000/-
80-89.99	25,000/-

Note: The student has to maintain a minimum CPI of 8.00 to avail the scholarship in the next year of his/her studies. The scholarship amount received in the first year will be applicable for all subsequent years

On the basis of JEE-MAIN Percentile: Candidates eligible for scholarship on the basis of JEE-MAIN Percentile as mentioned below:

JEE-MAIN Percentile	Scholarship amount
95-100	90% tuition fee waiver
90-94.99	75% tuition fee waiver
85-89.99	25% tuition fee waiver

Note: The scholarship amount received in the first year will be applicable for all subsequent years. The student has to maintain a minimum CPI of 8.00 to avail the scholarship in the next year of his/her studies

For B Pharm students: A scholarship worth Rs. 25,000/- per annum for the candidates possessing more than 90% marks in Physics, Chemistry and Mathematics / Biology at 10+2 as per eligibility requirements.

Note: The student has to maintain a minimum CPI of 8.00 to avail the scholarship in the next year of his/her studies.

For M Pharm students:

1. Scholarship for GPAT qualified candidates is Rs. 50,000 per annum.
2. Scholarship for Non-GPAT and GLAET qualified candidates is Rs. 25,000 per annum

Note: The student has to maintain a minimum CPI of 6.5 to avail the scholarship in the next year of his/her studies.

For M Tech students:

1. Scholarship for GATE qualified candidates is Rs. 50,000 per annum.
2. Scholarship for Non- GATE and GLAET qualified candidates is Rs. 25,000 per annum

Note: The student has to maintain a minimum CPI of 6.5 to avail the scholarship in the next year of his/her studies.

for M.Sc (Biotech/Microbiology)

Students: Scholarship for GLAET qualified candidates is Rs 30,000 per annum

For Ph.D. Students: A teaching Assistantship of Rs. 25,000/- per month will be given to selected full time research scholars in all streams.

2. Scholarship for general & OBC candidates (Economically weak):

Those students whose parents' annual income is less than Rs. 2 Lakhs are eligible to avail scholarship through social welfare department (Samaj Kalyan Vibhag) of UP Govt

3. Scholarship for SC/ST Candidates:

Those students whose parents' annual income is less than Rs. 2 Lakhs are eligible to avail scholarship through social welfare department (Samaj Kalyan Vibhag) of UP Govt

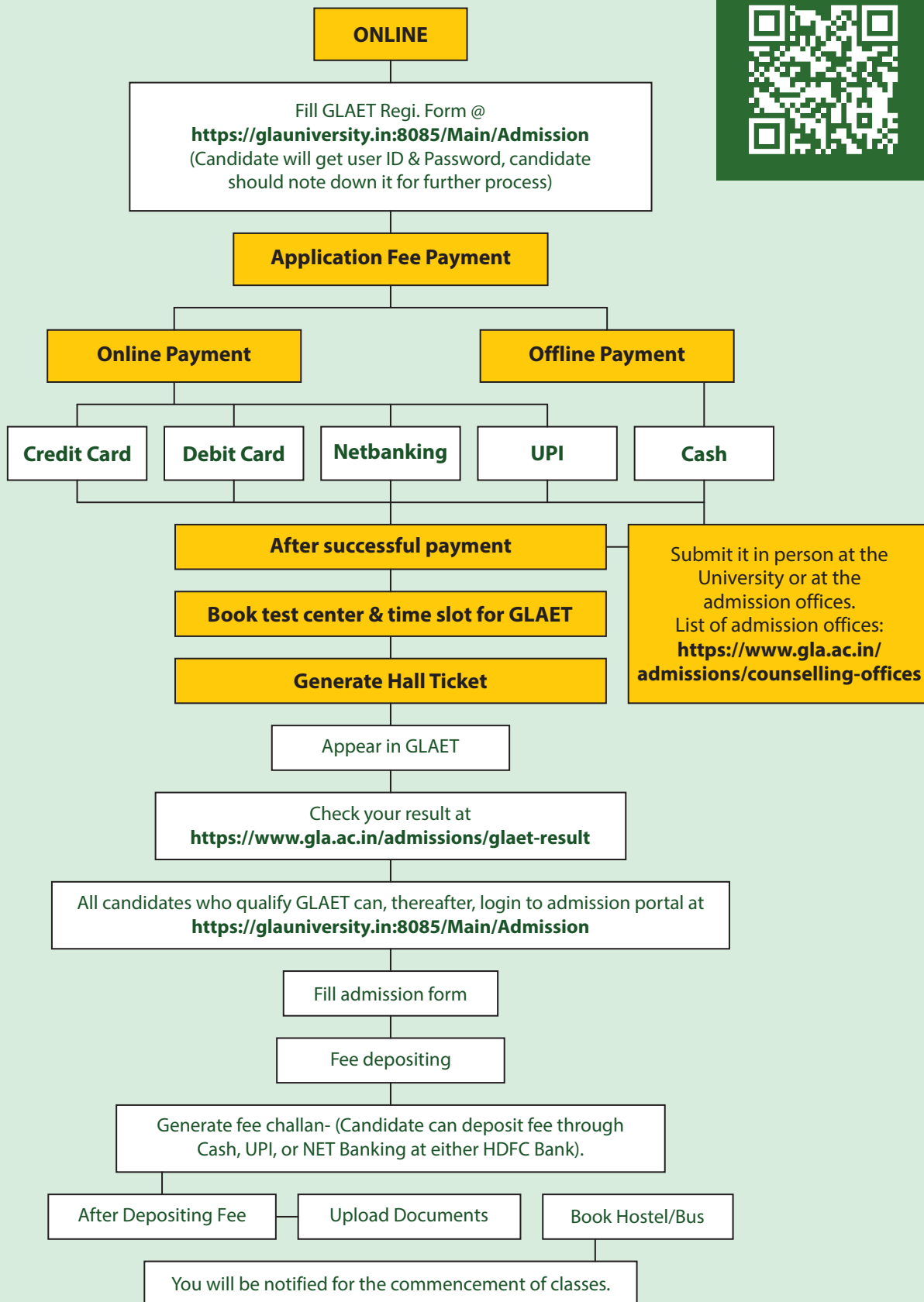
4. As per the UP Government's initiative to promote girl child education:

- If two real sisters take admission in the same academic year, **100% tuition fee** of one sister will be waived.
- If the sisters enroll in **different programs**, the **tuition fee of the program with the lesser fee** will be waived.



GLAET REGISTRATION

SCAN HERE
TO REGISTER
FOR ADMISSION



*Registration Test Fee Rs.1,000/- for all other courses and Rs.500/- for D. Pharm, Diploma in Engineering and B. Ed.
Apply Now:- <https://glauniversity.in:8085/Main/Admission>

GREAT LEARNING ASSURANCE, *now* online.

The Centre for Distance and Online Education, GLA University is a foray into the sphere of digital learning by the GLA University, devoted to providing an exceptional education to learners through its burgeoning courses in the fields such as Business Administration, Management, Computer Application, and Accounting. It provides a full-fledged smart-learning experience with digital self-learning material, live sessions, and video-lecture series to the determined individuals seeking affordable and accessible quality education meeting industry standards to enhance their analytical skills for the corporate working environment.

REGISTER HERE



online.gla.ac.in

UGC APPROVED PROGRAMS OFFERED

- BBA
- BCA
- B.Com
- MBA
- MCA

#GharSe
Global

Enquire At: **9045954396**
7617595602
7617595603

www.online.gla.ac.in





Generative AI & ML



Drone Technology



VLSI Technology



IoT



EV Technology



Financial Markets & Banking



SCAN HERE TO REGISTER FOR ADMISSION



Accredited with **A+** Grade by **NAAC**

Mathura | Greater Noida

MATHURA CAMPUS

17km Stone, NH-44, Mathura-Delhi Road, P.O. Chaumuhan, Mathura-281406 (U.P.) INDIA

Contact Us: +91-5662-250900, 250909, 241489, +91-8171568270

GREATER NOIDA CAMPUS

15 A, Knowledge Park - II, Greater Noida - 201310 (U.P.) INDIA

Tel: +91-7900202111 | **Mob.:** +91-7900333955, 7037256969

GLA UNIVERSITY ONLINE

Mob.: +91-9568536853

Find details at: online.gla.ac.in

Admission Helpline:
+91 9027068068

Website: www.gla.ac.in
Email: admission@gla.ac.in



Disclaimer: This is a controlled document. Unauthorized access, copying and replication are expressly prohibited. This document must not be copied in any form without seeking permission from the competent authority at GLA University.