



**Ranked #1 in Haryana and #5 in
North India amongst all private engineering
colleges & universities by
BW BUSINESSWORLD Ranking 2022**



**3rd Best Emerging Engineering
Institute for Placement by
Times Engineering Survey**



**Industry Integration Award
for Law Course by Federation
of World Academics**

TABLE OF CONTENTS

1.	MESSAGE FROM THE HON'BLE CHAIRMAN	3
2.	MESSAGE FROM THE HON'BLE CHANCELLOR	4
3.	MESSAGE FROM THE HON'BLE PRO-CHANCELLOR	5
4.	MESSAGE FROM THE HON'BLE VICE CHANCELLOR	6
5.	MESSAGE FROM THE HON'BLE REGISTRAR	7
6.	ADVISORY COMMITTEE	8
7.	GUEST FACULTY	9
8.	DISTINGUISHED PROFESSORS FROM ABROAD	10
9.	GOVERNING BODY	11
10.	INTELLECTUAL CAPITAL	12
11.	K.R. MANGALAM GROUP LEGACY	13
12.	ABOUT K.R. MANGALAM UNIVERSITY	14
13.	WELCOME TO K.R. MANGALAM UNIVERSITY	15
14.	WHAT MAKES K.R. MANGALAM UNIVERSITY THE TOP CHOICE FOR QUALITY EDUCATION AND CAREER OPPORTUNITIES?	16
15.	LOGO AND MOTTO	17
16.	ACADEMIC JOURNEY TOWARDS EXCELLENCE	18
17.	PRIDE IN EDUCATION EXCELLENCE: CONVOCATION 2024	19
18.	UNIVERSITY ORGANOGRAM	21
19.	ACADEMIC INFRASTRUCTURE	22
20.	ACADEMIC AND INDUSTRY PARTNERS	23
21.	OUR ACCLAIMED FACULTY	25
22.	LEARNING RESOURCES: LABS, STUDIOS & WORKSHOPS	26
23.	NATIONAL EDUCATION POLICY (NEP) IMPLEMENTATION	27
24.	ACHIEVING TOP RANKINGS NATIONWIDE WITH UNWAVERING CONSISTENCY	28
25.	AWARDS AND RECOGNITION	29
26.	PLACEMENT AND TRAINING CELL	30
27.	TOP RECRUITERS AND ACADEMIC PARTNERS	31
28.	PROMISING ALLIANCES	32
29.	GRANTS AND PATENTS	33
30.	RESEARCH & ACHIEVEMENTS	34
31.	ADMISSIONS PROCESS, GUIDELINES	35
32.	Student Product/Prototype Development	36
33.	RESEARCH CENTER	37
34.	DESIGN THINKING LAB: OUR KEY TO CULTIVATE INNOVATION	38
35.	INSTITUTIONAL COLLABORATIONS	39
36.	SCHOLARSHIPS & LOAN FACILITIES	40
37.	STUDENT CONDUCT & RULES	41
38.	ATTENDANCE RULES & ELIGIBILITY FOR SEMESTER EXAMS	43
39.	CLUBS & SOCIETIES	44
40.	ENTREPRENEURSHIP & STARTUPS	46
41.	SPECIALISED CELLS	48
42.	STUDENTS HELPDESK	49
43.	COMMITTEES ON ANTI-RAGGING, STUDENT DISCIPLINE .	50
44.	CENTRES OF EXCELLENCE	51
45.	CONTACT NUMBER OF IMPORTANT PEOPLE AT KRMU	52
46.	INTERNATIONAL EXPOSURE, INTERNATIONAL COLLABORATIONS & MOUS	53
47.	ALUMNI ASSOCIATION	54
48.	TESTIMONIALS	55
49.	EXTENSION AND OUTREACH ACTIVITIES	56
50.	LIFE@KRMU	57
51.	STATUTORY APPROVALS	59

MESSAGE FROM THE HON'BLE CHAIRMAN

SHRI YASH DEV GUPTA
K.R. MANGALAM UNIVERSITY



K.R. Mangalam University lays special emphasis on all-round development and class-apart education through its interactive learning and two-way communication processes. This aids in making the learning environment sincere and responsive. The aim of the university is to constantly ensure that its students are provided with all the facilities possibly required, so that they may hone their potential and develop a constructive attitude towards life.

K.R. Mangalam University maintains a proud record of

evolving efficient, confident and learned technocrats, pharmacists, managers, and entrepreneurs who display global thinking and possess a futuristic mindset. As members of a corporate community, we still do practice active sustainable development goals. As Chairman of the Sponsoring Body and Member of the Governing Body, K.R. Mangalam University, I would like to acknowledge the consistent efforts of all our faculty members and staff who have strived to make the academic years noteworthy in all respects.

MESSAGE FROM THE HON'BLE CHANCELLOR

PROFESSOR (Dr.) DINESH SINGH
K.R. MANGALAM UNIVERSITY
FORMER VICE CHANCELLOR
(UNIVERSITY OF DELHI)



It gives me immense pleasure to introduce K.R. Mangalam University to young, aspiring, and energetic students who wish to craft successful careers for themselves in the corporate world. The world is changing rapidly, necessitating professionals to continually upskill through constant unlearning and relearning. Technologies are evolving at an unprecedented pace, challenging human minds to rise above routine and strive to create new models and designs for businesses and society at large. The challenges posed by intelligent and smart machines are generating jobs that require an intrapreneurial and entrepreneurial mindset in professionals.

Our university, with its rich history and vibrant community, stands as a beacon of knowledge and innovativeness, harnessing the creativity and ingenuity of students. The University is growing

and evolving rapidly to keep pace with the volatility and uncertainty of the world. The diversity and inclusivity catalyzed by the multidisciplinary education ecosystem nurtured in the University provide an unparalleled and unique opportunity for students to explore their potential, channelize their energy, and transform into a much better version of themselves.

The culture of education at the University fosters individual talents in students, thereby creating a productive and proactive workforce for the country. The eco-friendly campus provides a comfortable and enjoyable environment for every member of the University. I extend my best wishes to each and every student and all members of the KRMU family for a successful, fulfilling, and prosperous journey with the University in the times to come.

MESSAGE FROM THE HON'BLE PRO-CHANCELLOR

SHRI ABHISHEK GUPTA
K.R. MANGALAM UNIVERSITY



As the Pro-Chancellor of K.R. Mangalam University, it is my privilege to welcome you to an institution where excellence, innovation, and leadership are not just values but the very foundation of our approach. At KRMU, we are unwavering in our commitment to shaping future leaders who are equipped to thrive in an ever-changing world. In today's rapidly evolving landscape, success demands more than just knowledge—it requires an unwavering dedication to continuous learning, adaptability, and the relentless pursuit of excellence. Our university adopts a bold, multidisciplinary approach that fosters a diverse, inclusive environment where each student is empowered to realise their full

potential. Here, you will not only hone critical skills but also cultivate the creativity, strategic thinking, and collaborative spirit necessary to lead in the professional world. KRMU's state-of-the-art, eco-friendly campus is designed to inspire and foster both intellectual and personal growth, ensuring a space where connections are made, ideas flourish, and ambition takes root.

As you embark on this transformative journey, I extend my heartfelt wishes for your success. At KRMU, you are not merely preparing for a career; you are forging a future of influence, purpose, and extraordinary achievement.

MESSAGE FROM THE HON'BLE VICE CHANCELLOR

PROFESSOR (Dr.) RAGHUVIR SINGH
K.R. MANGALAM UNIVERSITY



"There are no secrets to success. It is the result of preparation, hard work, resilience & learning from failure."

I express profound happiness in welcoming every student at K.R. Mangalam University. I appreciate your choice of K.R. Mangalam University (KRMU) as a catalyst & vehicle for your successful career and happy life. We are glad to assure you that you are at one of the most employability & entrepreneurship-focused universities located in one of the most happening cities in the world. You will be blessed with a great real-world learning experience in every field of knowledge and will have plenty of opportunities to interact and learn from the best practitioners of the profession in your area of interest.

We at KRMU take immense pride in our teaching-learning processes which are curated to develop each student holistically. Our well-designed learning experience comprising both inside the classroom and outside the classroom promises

a learning experience focused on holistic development encompassing the three domains of learning: Cognitive, Affective & Psychomotor.

You will be welcomed with a whole new experience of learning the first day you join KRMU by having the complete learning journey of your chosen programme in the form of a "Structured Learning Pathway" which depicts every event, activity and experience in detail. This will assure you a well-defined approach to learning. I am sure your learning and stay with us will be highly exciting and productive which will immensely contribute to your life in the future. Together, we will overcome all hurdles in your holistic development.

Wish you all the best and great learning with us.

"The best investment by far is to develop yourself by spending time every day sharpening your axe so that you become a lubricant, not seawater, to your life and career. Individual development results from what one thinks and does."

MESSAGE FROM
THE HON'BLE
REGISTRAR
(Dr.) RAHUL SHARMA
K.R. MANGALAM UNIVERSITY



I welcome you all at K.R. Mangalam University, Gurugram. We are happy to acknowledge that you have joined one of the best University Campus in this Cyber City, Gurugram. Our objective is to improve the standards of teaching to achieve excellence in higher education and provide high worth education to students from different Countries.

K.R. Mangalam University is well-known for its academic excellence, innovation, and inclusivity. It was established with the aim of becoming an internationally recognised higher education

institution. Over the years, with a rich legacy of academic excellence, a pool of experienced educators and professionals, a commitment to nurturing intellect, promoting holistic development, and an exceptional placement record, it has earned the reputation of being counted among the top universities in North India.

K.R. Mangalam University has diverse academic programmes, state-of-the-art facilities, and experienced faculty members. We strive to provide a vibrant and conducive learning environment for all.

ADVISORY COMMITTEE

KRMU backed by academic and industry leaders

**Prof. Jack Copeland**

Distinguished Professor of Philosophy
University of Canterbury
New Zealand

**Mr. Pranav Roach**

President
Hughes Network Systems
India Limited

**Prof. Kavi Arya**

Professor, Department of
Computer Science
IIT Bombay

**Mr. Sunil Sethi**

Chairman, Fashion Design
Council of India

**Professor Umesh Rai**

Former Director, South Campus
Professor, Department of Zoology,
University of Delhi

**Prof. S G Badrinath**

Chairperson of the Centre for
Capital Markets and Risk Management
IIM-Bangalore

**Mr. Pawan Jaggi**

Chairman, ARSD College
University of Delhi

**Dr. Suman Sharma**

Principal
Lady Shri Ram College, D.U.

**Mr. Vinod Sood**

CEO
Hughes Systique

**Prof. Malashri Lal**

Former Dean Academic
Delhi University

**Mr. Pallav Sinha**

Founder
Mera Job India Private Limited

**Dr. Hemlata Reddy**

Principal
Sri Venkateswara College,
University of Delhi

**Prof. M.M. Chaturvedi**

Professor, Dept of Zoology
University of Delhi

**Dr. Pooja Sharma**

Senior Scientist,
Medanta Institute of Education
and Research

GUEST FACULTY

One of the major resources of KRMU is made of its professorate that plays a significant role in creation and dissemination of knowledge. The expertise and quality of the professorate is considered as one of the most important factors for the success of KRMU, the knowledge intensive organization with commitment.

Besides the chosen academic scholars from the best institutions in the country, KRMU has a Global Advisory Board which advises and guides the University for its successful functioning for academic excellence. This panel of academic experts includes professors from the echelon of academic world. Their advice and directions give international dimension to the curriculum, research, career orientation and campus life. The experts assist the University to achieve its vision of becoming a globally recognized leader in education.



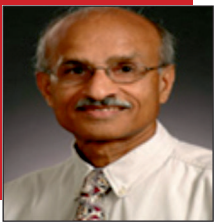
Prof. B.V.R. Chowdari

Executive Director
NUS-India Research Initiatives
Office of Deputy President
(Research & Technology)
National University of Singapore



Prof. Mohan S Kankanhalli

Vice Provost (Graduate Education)
Professor, Department of Computer
Science School of Computing
National University of Singapore



Prof. Ramakant Srivastava

Professor Emeritus
University of Florida, Department of
Electrical and Computer
Engineering



Prof. John L. Stanton

Professor of Food Marketing
Saint Joseph's University,
Philadelphia



Prof. Kulwant Pawar

BSc (CNA), MSc (Aston), PhD
(Aston), MCM, MILT
Professor of Operations Management,
Nottingham University
Director, Centre for Concurrent
Enterprise



Assoc. Prof. Chen Peng

Head, Division of Bioengineering
Division of Bioengineering
School of Chemical and Biomedical
Engineering, College of Engineering
Nanyang Technological University,
Singapore



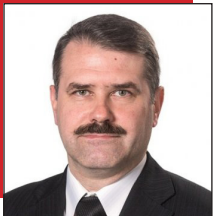
Prof. Bimlesh Wadhwa

Senior Lecturer
Department of Computer Science,
School of Computing
National University of Singapore



Assoc. Prof. Chen Zhong

Assistant Chair (Undergraduates)
School of Materials Science &
Engineering
Nanyang Technological University,
Singapore, Division of Materials
Science, School of Materials Science &
Engineering, College of Engineering



Valery A. Matyash

Vice-Rector for Educational
Activities
Saint Petersburg State University of
Aerospace Instrumentation (SUAI)
St. Petersburg, Russia



Dr. Andrey Denikin

Vice-Rector for Education and
Methodology,
Dubna State University Moscow
Oblast, Russia

DISTINGUISHED PROFESSORS FROM ABROAD

One of the major resources of KRMU is made of its professorate that plays a significant role in creation and dissemination of knowledge. The expertise and quality of the professorate is considered as one of the most important factors for the success of KRMU, the knowledge intensive organization with commitment.

Besides the chosen academic scholars from the best institutions in the country, KRMU has a Global Advisory Board which advises and guides the University for its successful functioning for academic excellence. This panel of academic experts includes professors from the echelon of academic world. Their advice and directions give international dimension to the curriculum, research, career orientation and campus life. The experts assist the University to achieve its vision of becoming a globally recognized leader in education.



Mr. Vikram Atal

Fellow of the UK Chartered Accountants Society and member of Governing Board of Goldman Sachs.



Prof. Jack Copeland

Distinguished Professor of Philosophy
University of Canterbury, New Zealand



Prof. Sunita Singh Sengupta

Dean, Faculty of Management,
University of Delhi



Mr. Vinod Sood

CEO
Hughes Systique



Dr. Shiv Kumar Kaushik

Associate Professor
Department of Mathematics,
Kirori Mal College, University of
Delhi



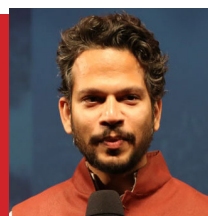
Prof. Sumanyu Satpathy

Professor of Eminence,
School of Humanities, KRMU



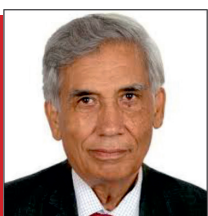
Prof. Sudhanshu Rai

Department of Management
Society and Communication,
Copenhagen Business School.



Mr. Chandradas Choudhury

The author of the novel Arzee, The Dwarf, which was shortlisted for the Commonwealth First Book Prize and chosen by World Literature.



Prof. Krishan Lal

C V Raman Chair,
Professor of Physics, KRMU



Prof. Anita Sharma

Former Pro vice Chancellor, KRMU;
Adjunct Fellow, Institute of Chinese
Studies; Professor, Department of
East Asian Studies, Delhi University
(Retd.)

GOVERNING BODY



Prof. Dinesh Singh
Chancellor (Ex-officio)



Shri Abhishek Gupta
Pro-Chancellor



Prof. Raghuvir Singh
Vice-Chancellor (Ex-officio)



Prof. Sukhwinder Singh
Secretary to Government, Haryana
Education Department



Shri Yash Dev Gupta
Nominated Member
(Sponsoring Body)



Shri Kapil Dev Gupta
Nominated Member
(Sponsoring Body)



**Prof. Ghanshyam Singh
(MNIT, Jaipur)**
Nominated Member (Sponsoring Body)



**Prof. Pradeep Kulshrestha (Dean,
Bennett School of Law)**
Nominated Member (Sponsoring Body)



Prof. Kavi Arya
Expert of Management/Technology
(Nominated by Chancellor)



Shri Rohit Gupta
Special Invitee



Dr. Rahul Sharma
Registrar (Ex-Officio)

INTELLECTUAL CAPITAL



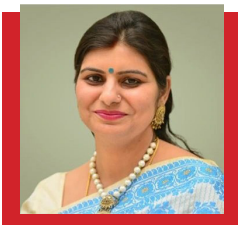
Professor (Dr.) Varuna Tyagi
Dean, Academics



Professor (Dr.) Pankaj Aggarwal
Dean, School of Engineering & Technology



Professor (Dr.) Inderpreet Kaur
Dean, School of Legal Studies



Professor (Dr.) Indira Bhardwaj
Dean, School of Management & Commerce



Professor (Dr.) Hema Chaudhary
Dean, School of Medical and Allied Sciences



Professor (Dr.) Meena Bhandari
Dean, School of Basic and Applied Sciences



Professor (Dr.) Tanaya Verma
Dean, School of Architecture and Design



Professor (Dr.) Mamta Shankar
Dean, Physiotherapy and Rehabilitation Sciences



Professor (Dr.) Tania Gupta
Dean, School of Humanities & School of Education



Professor (Dr.) Joginder Yadav
Dean, School of Agricultural Sciences



Professor (Dr.) Anjana Singh
Dean, Hotel Management & Catering Technology



Professor (Dr.) Amit Chawla
Dean, School of Journalism and Mass Communication

K.R. MANGALAM GROUP LEGACY

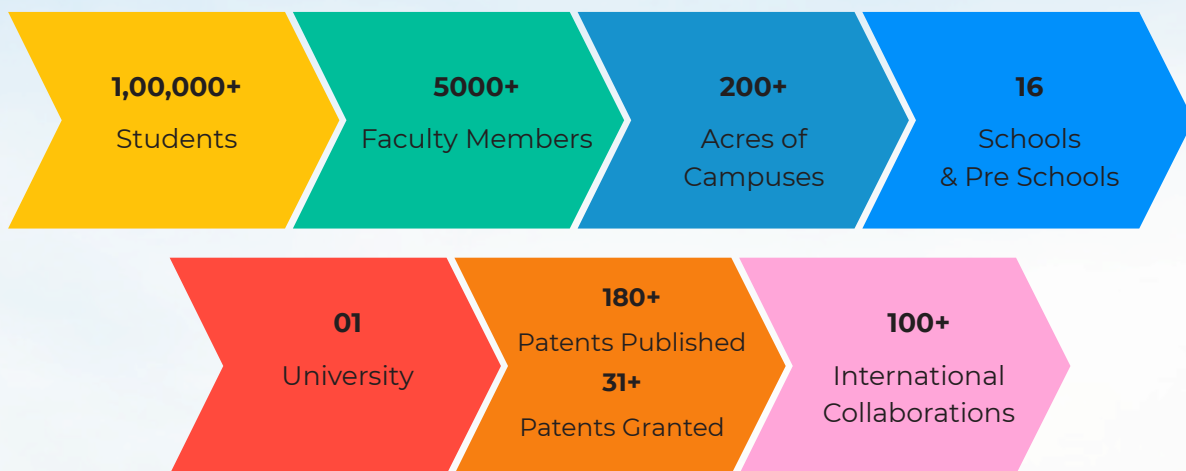
The legacy of the K.R. Mangalam Group is deeply rooted in the belief that "Education is a journey, not a destination." Since its establishment in 2004, the group has been committed to providing quality education that caters to the diverse needs of its student community.

From its humble beginnings with a world-class school in Greater Kailash – II, the group has evolved into a dynamic educational conglomerate with innovative learning setups spanning across various educational levels and geographies.

The Group's foray into higher education with the K.R. Mangalam Institute of Management marked a significant milestone. Within a short span of six years, the institute emerged as one of the leading B-Schools in Delhi, thanks to its renowned faculty, contemporary curriculum, and industry-centric innovation. Today, the institute boasts of thousands of management scholars pursuing undergraduate and postgraduate programmes.

Building upon this success, the K.R. Mangalam Group established the K.R. Mangalam University (KRMU) in 2013 under the Haryana Private Universities Act. This state-of-the-art institution is rapidly gaining recognition as one of the top private universities in India, further solidifying the group's position as a leader in the world of education.

K.R. Mangalam Group at a Glance



ABOUT K.R. MANGALAM UNIVERSITY

Established in 2013 under the Haryana Private Universities Act by the esteemed K.R. Mangalam Group, K.R. Mangalam University (KRMU) has swiftly emerged as a leading private university in India. Known for its commitment to fostering academic excellence and holistic development, KRMU offers a dynamic learning environment that integrates traditional education with innovative practices. The university provides a diverse array of undergraduate, postgraduate, and doctoral programmes across various disciplines, including engineering, management, law, and the arts.

KRMU's state-of-the-art campus, located in Gurugram, Haryana, boasts modern facilities, advanced laboratories, and extensive research opportunities, ensuring that students receive a world-class education. The university is dedicated to nurturing future leaders by emphasizing a curriculum that blends theoretical knowledge with practical experience. With a faculty composed of seasoned academicians and industry experts, KRMU ensures that its students are equipped with the skills and knowledge required to excel in a globalized world.

The university's commitment to excellence extends beyond academics to include a vibrant campus life with numerous extracurricular activities, clubs, and societies. KRMU's focus on holistic development aims to shape well-rounded individuals who are not only academically proficient but also socially responsible and globally aware. As a testament to its quality, KRMU has garnered various accolades and partnerships with leading global institutions, further enhancing its reputation as a premier destination for higher education in India. With a vision to become a center of academic and professional excellence, K.R. Mangalam University continues to innovate and expand, preparing its students to meet the challenges of the future with confidence and competence.

Vision

"To be a global leader in innovative, transformative education, empowering students with the knowledge, skills, and values needed to excel in a rapidly evolving world. Through interdisciplinary excellence, cutting-edge research, and strong industry partnerships, we are dedicated to shaping future leaders who will drive positive change and contribute meaningfully to society and nation-building."

Mission is to:

- Foster employability and entrepreneurship through futuristic curriculum and progressive pedagogy with cutting-edge technology.
- Instil notion of lifelong learning through stimulating research, Outcomes-based education, and innovative thinking.
- Integrate global needs and expectations through collaborative programmes with premier universities, research centres, industries, and professional bodies.
- Enhance leadership qualities among the youth having understanding of ethical values and environmental realities.

Core Values

1. Excellence

We are committed to achieving the highest standards in education, research, and service, continually striving for excellence in all our endeavors.

2. Integrity

We uphold the principles of honesty, transparency, and ethical conduct in all our interactions and practices, fostering a culture of trust and respect.

3. Innovation

We encourage creativity and innovation in teaching, learning, and research, continuously exploring new ways

to solve problems and advance knowledge.

4. Inclusivity

We embrace diversity and foster an inclusive environment where everyone is valued and empowered to contribute to their fullest potential.

5. Lifelong Learning

We promote the continuous pursuit of knowledge and skills, encouraging our students, faculty, and staff to remain curious and adaptable in an ever-changing world.

6. Social Responsibility

We are dedicated to making a positive impact on society through education, research, and community engagement, aiming to address global challenges and promote sustainable development.

WELCOME TO K.R. MANGALAM UNIVERSITY



K.R. Mangalam University, Sohna Road, Gurugram is a private University founded by Mangalam Edu Gate, a company incorporated under Section 25 of the Companies Act, 1956. The University has been established by an act of state legislative of Haryana as a private university. It is empowered to award degrees recognized by the UGC under Section 2f of the UGC Act, 1956. It offers a wide range of academic programmes across disciplines like Engineering & Technology, Law, Basic & Applied Sciences, Management and Commerce, Journalism & Mass Communication, Hotel Management & Catering Technology, Medical & Allied Sciences, Architecture & Planning, Design, Fashion, Humanities, Education, Agriculture, Physiotherapy and Ph. D. programmes – thus showcasing why this university should be your first choice destination for study.

A commitment to equity, social justice and excellence forms the bedrock of the philosophy and values of the university. The University nurtures these values among its students through teaching-learning, research and outreach activities. Doing so, the University aims to facilitate holistic education for its students in all respects. The unique learning facilities and the state-of-the-art infrastructure exalts its students to be professionally skillful, socially committed and globally successful. The exposure to the organizations and associations of international status is a unique experience for

students on their path to success. The University offers opportunities for multi-disciplinary education that transcends beyond the boundaries of Science and Arts. It is incessantly aiming towards perfection, innovating new dimensions and opening fresh avenues and opportunities for the new generation. Alongside, the University keeps in sight its aim to create employable professionals and practitioners, and to develop entrepreneurial skills among the students.

One of the distinct strengths of KRMU is the quality education. In addition to that, the well-qualified and experienced faculty members, the panel of experts as the visiting faculty, guest lectures and other curricular activities provide the most effective learning experience. The advanced laboratories, workshops, studios and the activity rooms give the practical experience of the knowledge disseminated. The continuous evaluation system and the systematic mentoring are the two major measures that enable the holistic growth and development of the students of K.R. Mangalam University. The campus is free from the offense of ragging along with varied facilities for the all-round development of the students, with its sprawling around greenery in an idyllic setting, visual delight as the most sought after place for students. The favourite student hangouts include gym, indoor and outdoor game courts, and cafeteria, playgrounds, lawns etc.



WHAT MAKES K.R. MANGALAM UNIVERSITY THE TOP CHOICE FOR QUALITY EDUCATION AND CAREER OPPORTUNITIES?

The university's innovative learning environment, state-of-the-art infrastructure, committed, qualified and experienced mentors, exposure to practical experience of knowledge, career-oriented smart learning, value based grooming etc. are some of the special features that rank KRMU amongst the most forward looking universities in the country in terms of 'excellence in education'. The credentials that accord KRMU an international status are mentioned below:

Education through Innovation

The institution is dedicated to creating a generation of dynamic professionals; to facilitate education through laborious innovation and design avenues that are futuristic. It has superseded conventional learning with project-based and trans-disciplinary collaborative learning that addresses the prerequisites and challenges faced by the nation.

Global Reach

Nowadays education and opportunity are not restricted to one country or continent. They span across the globe and with this belief, K.R. Mangalam University has set out on a path that reaches out to academicians and intellectuals from all over. It has strong collaborations with Middlesex University, London, Houston University, UK and many more under which many articulations are framed to inculcate innovative learning programmes.

Time-Relevant Academic Curriculum, Continuous Updating and Counselling Systems

The curriculum designed by the experts of the academic world with valuable guidance from the distinguished academicians of the K.R. Mangalam University, provides time-relevant learning modules and continuous access and up-gradation to newer developments.

Campus Life

A campus life that sets the pace for success throughout life and an academic environment that emphasizes on learning with dignity, reverence for chosen studies, and clearly defined objectives that provides for international exposure and optimization of opportunity. The combination of freedom and discipline provides for an environment conducive to academic thinking.

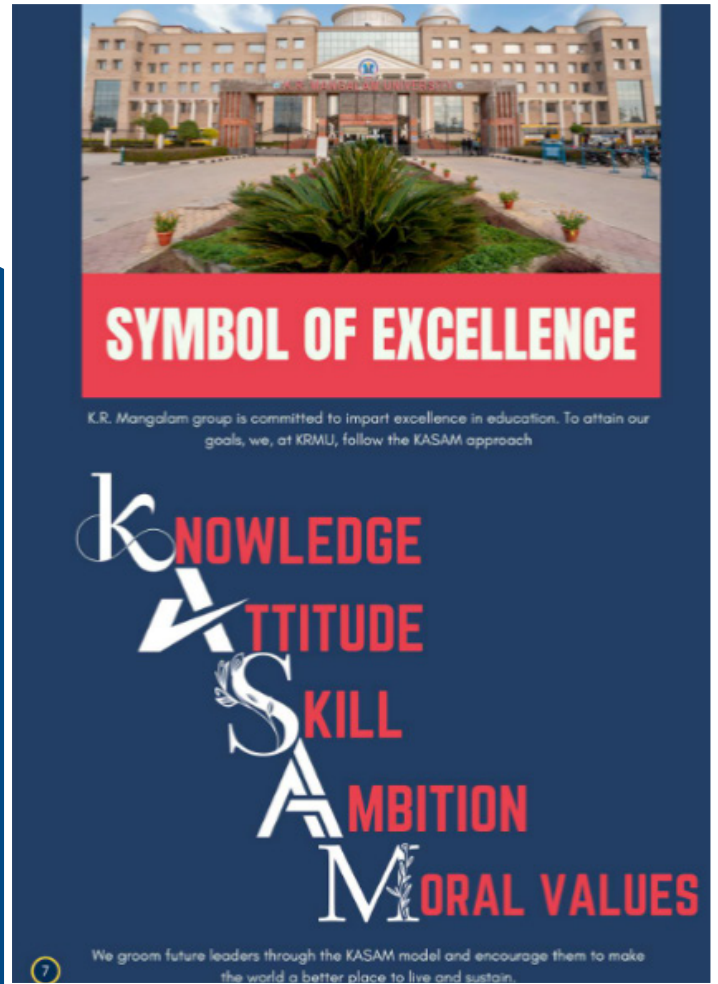
Outreach Activity

KRMU aims at building healthy trust and relationships with all its students. The students in consideration of that are genuinely happy and content. They enjoy themselves being at the campus, both inside and outside the classroom. The university calls upon its active listening skills to understand each of its students, and to recall this information in a follow-up conversation. It is a key skill for building connections and associating with the students. There is a constant support available in terms of advisors and mentors.

Location

Geographically, KRMU is located in a picturesque location with magnificent view of Aravalli hills. The campus is green and has all facilities and resources for a conducive learning environment.

LOGO AND MOTTO



The emblem of K.R. Mangalam is the symbolic representation of the enlightenment of spirit and empowering the youth with global values and beliefs. The flame represents the passion and burning desire for acquisition of knowledge and the torch an everlasting penchant to achieve leadership. The human elements holding the torch reflect a value system that respects humanity as a whole and treats the world as a close-knit network.

The convocation cap signifies accomplishment while the trophy represents achievements. The ultimate destination of any academic pursuit being success, the emblem embodies the spirit in its design principle.

The emblem of K.R. Mangalam incorporates all the elements together to make the institution what it is today.

The classic contrasting theme of RED and BLUE, used by the brand officially indicates the stark contrast in the approach of the brand. While the warm toned red colour signifies the powerful, impactful and bold approach towards excellence and success, whereas on the other hand the cool toned blue is subjected to tranquil and calm environment they strive to provide at KRMU



ACADEMIC JOURNEY TOWARDS EXCELLENCE

The K.R. Mangalam legacy, encompassing a distinguished group of educational institutions including schools and the university, is a testament to our enduring commitment to academic excellence and innovation.

Our journey began with the establishment of our first school, marking the genesis of a vision to redefine educational standards. Since then, each institution under the K.R. Mangalam umbrella has been a milestone in our quest for educational excellence.

Throughout our history, the K.R. Mangalam Group has been at the forefront of educational innovation, constantly evolving to meet the needs of a changing world. Our institutions are more than just places of learning; they are cradles of intellectual and personal growth, where students are encouraged to explore, innovate, and excel.

The next-generation institution offers a myriad of Undergraduate, Postgraduate and Doctoral Degree programmes across multiple disciplines, under the mentorship of highly qualified faculties.

K.R. Mangalam University (KRMU) proactively organizes seminars, industrial visits, experts lectures, internships, symposiums, campaigns and many more activities, providing students with a 360°

exposure to various trends, helping them build diverse viewpoints.

Along with advanced learning, the university gives paramount importance to co-curricular activities such as vibrant festival celebrations, social responsibility activities, tech training, research and many more activities. Recognized for its virtues of quality, equality, inclusiveness, sustainability, and professional ethics, KRMU is synonymous to academic excellence and innovation.



PRIDE IN EDUCATION EXCELLENCE: CONVOCATION 2024



“Technical Education and Innovation are the Cornerstones of Progress in Today’s World.” Governor of Haryana Shri Bandaru Dattatraya

6th Convocation of K.R. Mangalam University, Gurugram held on February 25, 2024

Gurugram: On Sunday, 25th February 2024 at K.R. Mangalam University held its 6th Convocation at its lush green campus, Sohna road, Gurugram. Governor of Haryana **Shri Bandaru Dattatraya** graced the convocation as the chief guest and addressed the ceremony.

Honourable Governor, Shri Bandaru Dattatraya told the graduates about the importance of dedication,

discipline, devotion, sacrifice and to be useful for community in the field of education and society at large. He highlighted the importance of the National Education Policy 2020 and appreciated the University for implementing the key elements of National Education Policy which are innovation, technology and research. He was happy to see a large number of female students being conferred degree including gold medals and PhD degrees.

He specially told students not only to be a job seeker but to become an entrepreneur or employer to provide jobs to other and also encouraged them to be useful in the service of underprivileged and needy citizen of the country. He also emphasised on





the character building as the most desirable asset beyond money, health and fame.

Total of 565 degrees were conferred during the convocation, including 34 Ph.D. degrees (12 male, 22 female), 136 postgraduate degrees (71 male, 65 female), 364 undergraduate degrees (207 male, 157 female), and 31 diploma degrees (21 male, 10 female). On this occasion, 21 students (2 male, 19 female) honoured with gold medals for their outstanding performance in their respective academic disciplines.

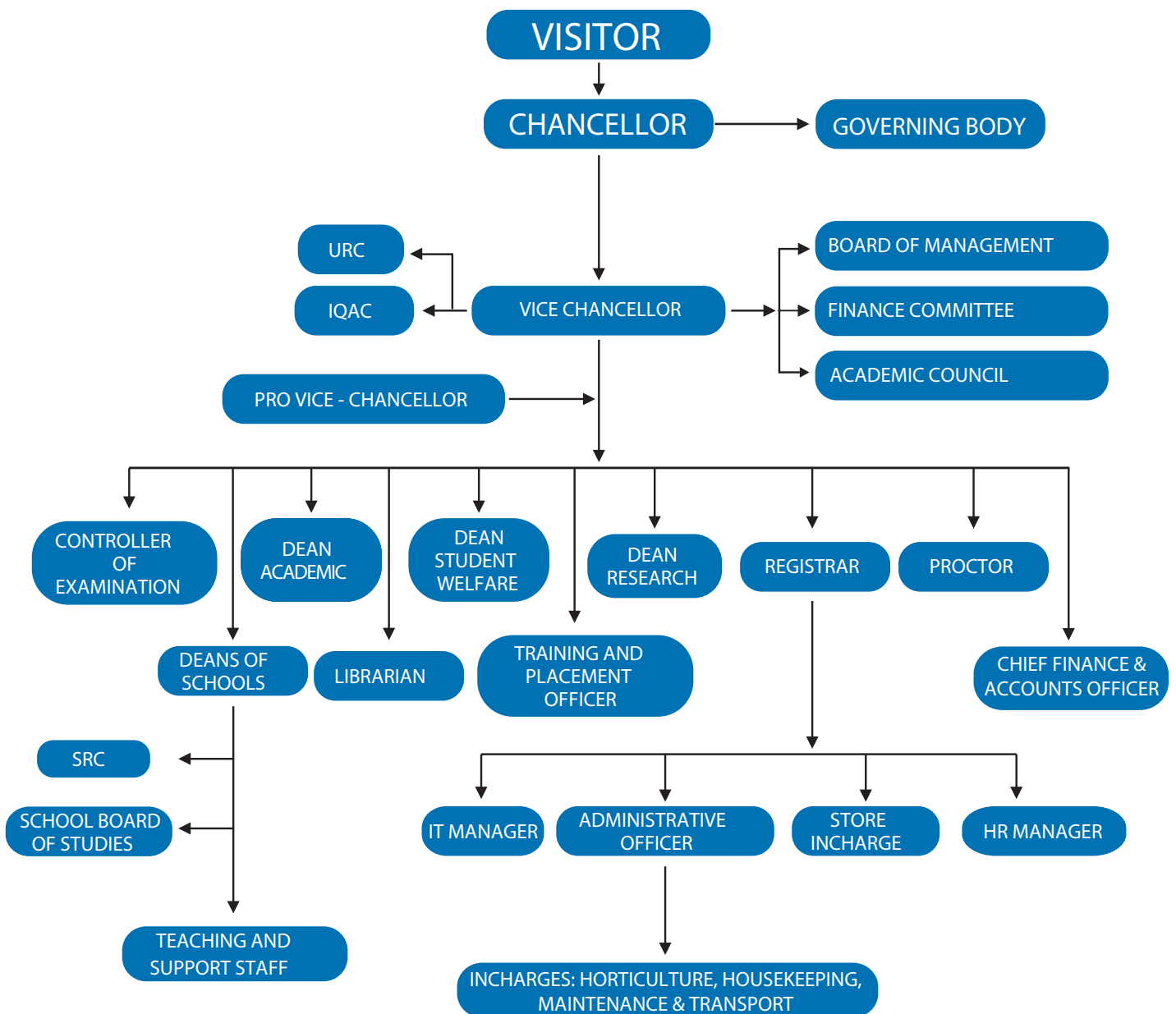
The Chancellor of the University and Vice-Chairman of the Jammu and Kashmir State Higher Education Council, Padma Shri Professor Dinesh Singh said "Our vision is not just for today, but for Viksit Bharat 2047, an India that flourishes with knowledge, prosperity, and boundless possibilities". As we champion a young university and a young education system, we embark on a transformative journey, cultivating an environment that nurtures curiosity, creativity, and critical thinking.

Professor Rakesh Kumar Sinha, Vice-Chancellor of K.R. Mangalam University, presented the annual report of the university for the session 2022-2023, highlighting the key activities and innovative new courses in the tune of National Education Policy.

The grand ceremony ended with an oath taking by all graduates followed by National Anthem and academic procession.



UNIVERSITY ORGANOGRAM



ACADEMIC INFRASTRUCTURE



K.R. Mangalam University always strives for the creation and enhancement of infrastructure to promote good teaching and learning environment. The University has a green treat spread over an area of 30 acres comprising 16 schools and pre-schools distributed in three academic blocks. These blocks encompass physical facilities that support the teaching-learning process through classrooms, seminar halls, laboratories, studios, office space, student amenities, library, Medical Room, and staff rooms.

The teaching-learning facilities include 128 classrooms, 2 seminar halls, 75 laboratories and 13 studios that possess audio-visual systems, computers, ICT enabled tools and adequate numbers of chairs, benches, and podium. The well-equipped modular laboratories consist of pre-requisites such as water supply, LPG gas facility, fume hood, exhaust fan and preparatory areas.

The university comprises agricultural farms and herbal garden spread over an area of 2 acres, wherein students perform practical, and research associated with core areas of agronomy, horticulture, and pharmaceutical sciences.

The well spacious classrooms, laboratories and seminar halls are equipped with ICT enabled facilities such as LCD projectors, Lecture Capturing System (LCS), Smart Interactive Touch Panels, Wi-Fi, and LAN in addition to tools such as ZOOM and MS Teams that enable to connect through online mode, to contentedly meet the academic requirements.

The University has adopted the Learning Management System (LMS), Moodle that provides

extensive management of the various courses taught via conceptualizing the online platform of teaching resources in a systematic manner for the students to facilitate them for enhanced learning.

The University has a multi-purpose hall with seating capacity of around 150 persons, fully air-conditioned well maintained with modern amenities to host confined gatherings for academic.

MASSIVE LIBRARY

Digital library

- E-books and E-journals
- Separate zones for research, reference work and reading
- Browsing terminals
- Good collection of National & International Journals
- Spacious air-conditioner halls
- Collection of reference & text-books
- Newspaper reading desk

The knowledge hub of the University comprising of the Digital Library, is not only opulent and well-stocked; it is designed to present an ambience of dynamism and liveliness. Easy access to books, and resource material, ready assistance with an efficient helpdesk and attendants, make it a truly world-class library. The knowledge hub of the University comprises of various resources for knowledge gathering, learning and researching.

ACADEMIC AND INDUSTRY PARTNERS



PEDAGOGY AND LEARNING EXPERIENCE

The pedagogy of teaching is student centric and provides outcome-based education to the students. The attainment level of the students is calculated by aligning course outcomes with programme outcomes and strategies are developed to enhance attainment level of students. The current syllabus enhances communications and presentation skills, teamwork, innovation, problem-solving approach, planning and organization, self-management and provides holistic education and lifelong learning skills over and above the professional knowledge & Skills in a given discipline

TEACHING- LEARNING PROCESS

Student centric methods, such as experiential learning, participative learning and problem- solving methodologies are used for enhancing learning experience and teachers use ICT- enabled tools including online resources for effective teaching and learning process

The university is committed to creating a learning-centered environment for students to encourage participation, develop critical thinking, and the development of doing abilities. To enhance students' learning experiences, pedagogies like experiential learning, participatory learning, and problem-solving methodologies are used. Continuous efforts are made to improve overall learning, which are aided by the widespread use of ICT-enabled tools and other online sources.

EXPERIENTIAL LEARNING

The University's Educational Philosophy's primary principle is experiential learning. Students are engaged through practical activities, moving beyond

conventional classroom lectures. Students acquire practical information and abilities beyond the realm of the textbooks by implementing "Learning by Doing," "Activity-based Learning," and "Project-driven Learning" into their curriculum framework.

- ▶ KRMU offers hands-on learning opportunities through practical labs, workshops, internships, social projects, field projects and industry collaborations. These experiences allow students to apply theoretical knowledge in real world contexts, fostering deeper understanding and skill development.
- ▶ The university organises workshops and field trip and encourages students to work on case studies and projects that engage them in active exploration and experimentation, promoting experiential learning across various disciplines.
- ▶ Activities such as laboratory sessions/hands on training, trial advocacy, Moot Court, Legal counselling, pharmaceutical detailing, public awareness on various diseases and their possible treatment/prevention strategies etc are also included to provide students with diverse learning.

PARTICIPATIVE LEARNING

KRMU promotes participative learning by fostering a collaborative learning environment where students actively engage with course material and interact with peers and instructors.

- ▶ The university organizes group discussions, debates, seminars, and student-led presentations to encourage dialogue, critical thinking, and knowledge sharing among students.



- With the help of group projects, team-based activities, and peer-to-peer mentoring to facilitate collaborative learning experiences that promote deeper understanding and teamwork skills.
- Providing students with exposure to acquire knowledge and assimilate new skills is the purpose of involving them in activities like paper presentations and publication in conferences and journals.
- As part of participatory learning, the students organize and participate in technical fests, fashion exhibitions, contests, educational games, extempore, etc.

PROBLEM-SOLVING LEARNING

By applying problem-solving methodologies to its curriculum and extracurricular activities, K.R. Mangalam University prepares students to tackle complex issues effectively for curricular excellence.

- The university encourages students to apply critical thinking, analytical skills, and creativity to develop innovative solutions to complex problems such as developing mobile apps for cafeteria management to addressing environmental concerns, students engage in hands-on experiences that cultivate problem-solving skills.

- KRMU offers various courses, workshops, and seminars focused on problem-solving skills, providing students with the tools and strategies needed to tackle diverse challenges in their academic and professional endeavours.

USE OF ICT-ENABLED TOOLS

- KRMU leverages ICT enabled tools such as classrooms equipped with LCD projectors, smartboards, and high-speed internet to support interactive digital learning. Online learning platforms, multimedia resources, and educational software to enhance the teaching and learning process.
- KRMU integrates LMS and digital collaboration tools to facilitate communication, content delivery, assessment, and feedback between students and instructors.
- The university encourages faculty members to incorporate multimedia presentations, interactive simulations, online quizzes, and virtual labs into their teaching methods to enhance engagement and learning outcomes.



OUR ACCLAIMED FACULTY

We are proud to have handpicked faculties that give focused direction to our students. Our faculty members are among the most qualified in the region with many years of academic and practical experience in their areas of expertise. Our faculty have been chosen not only for their excellence in teaching but also for their interest in working closely with the students.

They are highly motivated through a clear performance management process and take pride in the energy and enthusiasm they bring to each lecture. Our present faculty strength is 175 - they comprise of 47 PhDs holders and 128 Postgraduates .

There is a conscious and continuous effort by the University to widen its faculty base and

add greater variety and depth to the scope of teaching. We have empaneled some of the most respected academicians and industry experts. Sharing firsthand knowledge, they strive not only to provide students with the best study material, but also put their talent to the practical test, time and again. Consistently exceeding expectations, they strive to create new and innovative ways to enhance the quality of education.

Our faculty is engaged in a wide variety of activities besides substantial academic and research commitments. Faculty members are encouraged to interact with peer groups by participating in education programme and international conferences. Faculty involvement in academic, research and consultation activities leads to a significant output of publications in leading national and international journals.

The faculty employs a wide range of teaching methods to create a varied and holistic learning environment. These include structured lectures, seminars, workshops, case studies, hands-on computer work, project assignments, role plays and business simulations.

LEARNING RESOURCES: LABS, STUDIOS & WORKSHOPS



- ▶ Engineering Labs
- ▶ Computer Labs
- ▶ E-Yantra Robotics Lab
- ▶ Pharmacy Labs
- ▶ Hotel Management Labs
- ▶ Language Lab
- ▶ Mechanical, Architecture & Fashion Workshops
- ▶ Architectural, AV Studios
- ▶ Moot Court
- ▶ Agricultural Lab
- ▶ Physiotherapy Lab
- ▶ Tie Dye and Printing Lab
- ▶ Specialized Kitchen Lab
- ▶ Guest Room Lab
- ▶ PCR TV Studio
- ▶ Physics Lab
- ▶ Forensic Lab
- ▶ Electrotherapy Lab
- ▶ Anatomy Lab
- ▶ Plant Pathology Lab
- ▶ Genetics and Plant Breeding Lab
- ▶ Machine Shop

- ▶ Robotics Lab
- ▶ Pharmaceuticals Lab
- ▶ Pharmacology Lab
- ▶ Pharma Chemistry Lab

Classrooms at K.R. Mangalam University are spacious, acoustical, energy efficient, well-lighted, and are designed conforming to the global standards. The innovative and productive platforms where the students experience the application of knowledge through real life situations. There are more than 60 fully equipped state-of-the-art laboratories, studios, workshops etc. that represent a unique integration of innovative systems, architecture, structure and overall instrumentation that allow students to experiment and learn by doing.



NATIONAL EDUCATION POLICY (NEP) IMPLEMENTATION

K.R. Mangalam University (KRMU) has adapted its practices and curriculum to align with the National Education Policy 2020 (NEP 2020) objectives. The key focus is on promoting holistic development, interdisciplinary learning, and practical skills acquisition. The aim is to enhance students' intellectual, artistic, social, physical, emotional, and moral capacities.

To comply with the goals of the National Education Policy, KRMU has modified its procedures and curriculum. The priorities are promoting holistic development, multidisciplinary learning, and acquiring useful skills. The goal is to enhance students' academic, artistic, social, physical, emotional, and moral abilities.

The University, in its resolute commitment to NEP implementation, has established an NEP Committee for Phased Implementation. As a testament to this commitment, the university has converted three-year undergraduate programmes into four-year programmes, offering multiple entry and multiple exit options, starting from the academic session 2023-24. Interdisciplinary courses are offered in all programmes, and students are encouraged to select from open interdisciplinary/multi-disciplinary electives. All students are registered on the Academic Bank of Credits portal to facilitate multiple entry and multiple exit options.

Moreover, KRMU has introduced a more flexible and integrated approach to education by incorporating a blend of theoretical knowledge and practical application. The university's curriculum is designed to foster critical thinking, creativity, and problem-solving skills, preparing students for real-world challenges. This approach not only aligns with the NEP's vision of a more holistic and skill-oriented education system but also ensures that students are well-equipped to meet the demands of the rapidly evolving job market.

The university also emphasizes the importance of research and innovation. To this end, KRMU has established various research centers and innovation hubs that encourage students and faculty to engage in cutting-edge research projects. These initiatives aim to cultivate a research-oriented mindset among students, promoting a culture of inquiry and exploration.

In addition to academic and research endeavors, KRMU places a strong emphasis on extracurricular activities and overall well-being. The university offers a wide range of clubs and societies that cater to diverse interests, from sports and arts to community service and entrepreneurship. These activities are designed to nurture students' talents and interests, fostering a well-rounded development that goes beyond academics.

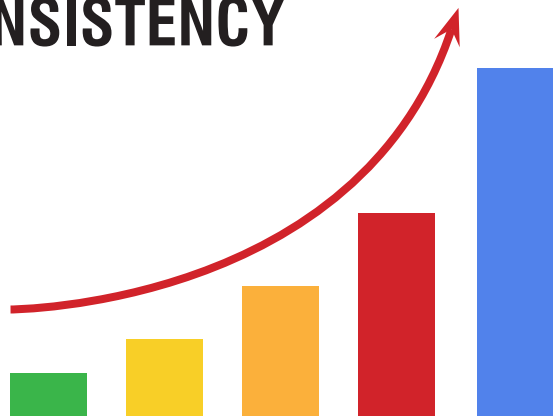
Furthermore, KRMU's commitment to NEP 2020 extends to its faculty development Programmes. The university regularly conducts workshops, seminars, and training sessions to keep its faculty updated with the latest teaching methodologies and industry trends. This ensures that the educators are well-equipped to deliver high-quality education and mentor students effectively.

Also, K.R. Mangalam University's adaptation of its practices and curriculum to align with the National Education Policy 2020 reflects its dedication to providing a holistic and interdisciplinary education. By fostering intellectual, artistic, social, physical, emotional, and moral development, the university aims to produce well-rounded individuals ready to contribute positively to society. The implementation of NEP 2020 at KRMU marks a significant step towards transforming higher education in India, making it more inclusive, flexible, and aligned with global standards.

ACHIEVEMENT AND PLACEMENTS



ACHIEVING TOP RANKINGS NATIONWIDE WITH UNWAVERING CONSISTENCY



No. 1
K.R. Mangalam University
Rank #1 in Haryana and #5 in North India Amongst all Private Engineering Colleges & Universities by **EW BUSINESSWORLD** Ranking 2022

No. 1
K.R. Mangalam University
Rank #1 in Haryana and #9 in North India Amongst all B-School as per **Times School** survey 2024 by **The Times of India** Optimal Media Solutions Survey



3rd Best Emerging Engineering Institute for Placement by Times Engineering Survey



Industry Integration award for Law Course by Federation of World Academics



Best Emerging University in North Overall Award by ASSOCHAM India



University that fosters Excellence in Education Award by WCRC Leaders

AWARDS AND RECOGNITION



India's Finest B-School Ranking 2024
By R World Institutional Ranking



Most Promising University
in NCR at Global Education
Conclave – 2023



Establishment of Institution's
Innovation Council (IIC)



Times Education Icons
2023 North



Best Private University for Excellence
Placement in North India on India
International Education Excellence
Awards 2023



Collegedunia Infrastructure
Excellence Awards 2023



Premium Legal Education
Institute of India by BW
Education



Best University/Institution for Invention
at ASIA PACIFIC EDUCATION &
TECHNOLOGY SUMMIT-2019



Best Engineering School by
OBSERVE NOW (ON)



Best Engineering College in
North India for Placement
2017 by CEGR



Industry Integration Awards
2020 at FWA Annual Industry
Academia Conclave



Certificate of Appreciation at
All India Essay Writing Event
2017



Colympics Cricket
Winner 2019



Catalyzing Innovation &
Collaboration Aura by HITEC



SPORTOPIA'22



3rd Institutional Life Skills,
Values, Gender, School Health &
Wellbeing Summit, New Delhi



Recognition in the
field of Education as
The Transformers

PLACEMENT AND TRAINING CELL

K.R. Mangalam University is a preferred destination for most of the MNCs to hire fresh talents from various fields of Engineering, Management, Law, Science, and more. More than two hundred companies visit the KRMU campus every year and carry out campus placement drives to recruit budding professionals based on their performance. The university boasts an excellent track record for placements.

Placement & Training Cell: From Campus Gates to Corporate Ladders

- Career Counselling
- Skill Development Programmes
- Corporate Mentorship
- Career Counseling Services
- Technical Skills Workshops
- Soft Skills Training
- Resume Writing and Interview Preparation
- Communication Skills Training
- Aptitude Training
- Technical Aptitude Training
- Maths Aptitude Training
- Value Added Courses
- NPTEL (National Programme On Technology Enhanced Learning)
- Entrepreneurship Development Cell
- Professional Etiquette and Networking
- Industry Guest Lectures and Panels



Recruiters and Academic Partnerships

We take immense pride in sharing that we have over 500 dedicated recruiters readily available to assist students with placements, along with over 100 industry and academic partnerships for invaluable connections. With our industry-aligned curriculum designed by Industry Experts from companies like IBM, ACCA, Xebia, Imaginxp, Samatrix.io, Siemens, EC- Council, Safexpress, GCEC Global Foundation, Imarticus Learning, etc, we ensure that our students receive the finest and most up-to-date education available.

TOP RECRUITERS AND ACADEMIC PARTNERS



PROMISING ALLIANCES

Collaborations



Memberships



Association



GRANTS AND PATENTS

TWO INCUBATION IDEAS UNDER THE AEGIS OF KEIC FOUNDATION GOT THE GRANT OF ₹15 LAKHS EACH FROM MSME



Monika Dahiya



Purvi Roy Gupta

We are elated to announce that KRMU - KEIC Foundation has been honored with the esteemed title of Host Institution (Nodal Center) for MSME, in recognition of our dedication to nurturing innovation and entrepreneurship. This acknowledgment underscores our commitment to empowering our community with the tools and resources needed to thrive in the ever-evolving business landscape. Alongside this prestigious title, we are proud to share that two of our incubated ideas have been selected for a grant of Rs. 15 lakhs from MSME.

The first idea, "Revolutionizing Recruitment: Enhancing Candidate Commitment and Mitigating

Offer Shopping" by **Monika Dahiya**, aims to transform the recruitment process by ensuring candidate loyalty and reducing offer shopping tendencies.

The second project, "Cattle Safety Chip - Paushtika" by **Purvi Roy Gupta**, addresses the critical issue of cattle safety with innovative chip technology, promoting the well-being of livestock and enhancing agricultural sustainability.

These remarkable initiatives exemplify the innovative spirit and entrepreneurial drive fostered within our institution, and we look forward to witnessing their impactful contributions to society.

Research & Achievements

- H-index: 30
- Total Citations: 3,986
- Journals Articles (WoS & Scopus): 610
- Patents: 96+ (Published)
- Patents: 29+ (Granted)
- Book/Book Chapters: 1,215

Control System

System



सत्यमेव जयते

Department of Science and Technology

SEED Division has sanctioned
Rs. 1.56 Crore Grant for
"KRMU KEIC STI HUB, SOHNA
BLOCK, GURUGRAM, HARYANA".

PI: Dr Anshika Prakash and Co-PI:
Dr Seema Raj



Indian Council of Social Science Research

University has received the
sanction of Rs. 20 lakhs from
Indian Council of Social Science
Research for a Research Project

RESEARCH & ACHIEVEMENTS

ADMISSIONS PROCESS, GUIDELINES (2025-26)

The Admission guidelines shall comprise of the following steps:

- a) Release of Admission Notifications through various publicity modes. The applicants can apply for admission, both online and offline.
- b) Education Counsellors/Faculty representatives from Schools should take care of the admission enquiries and counsel the candidates/parents about the programmes/courses etc and clear their doubts.
- c) Examine the admission forms received for eligibility check.
- d) Plan/make arrangements for the conduct of the K.R. Mangalam University Entrance Examination (KREE) for entrance, wherever required, for eligible applicants. The exam will be conducted at the University campus, designated centres and through online mode. The exam will be of 30 minutes duration comprising questions on Quantitative/Qualitative Aptitude, Subject Knowledge, General English, General Awareness, etc.
- e) Candidates who have cleared KREE will be further assessed through a personal interview by the faculty of the respective programme offered by the concerned school for their Subject Knowledge, Overall Behavioural Pattern, English Communication, Personality, etc.
- f) The documents of such candidates as are found fit shall be scrutinised by the admission audit team and the final selection list shall be put up to the Admission Committee for approval.
- g) The candidates in the approved list shall be offered admission, and they are advised to pay the total applicable fee at the earliest and confirm their provisional admission.
- h) The complete documents of the admitted student shall be sent to the Registrar's Office on or before the Induction programme day. Failure to do so may result in the cancellation of Provisional Admission.



STUDENT PRODUCT/PROTOTYPE DEVELOPMENT

SEED FUNDING AT KRMU

Student-Designed Innovations at KRMU

1. SWA Locker: A solution for secure storage of belongings and data, suitable for both urban and rural residents.
2. Wink Eat: A food delivery app catering to the hospitality and food service industry.
3. BTrack: A comprehensive transportation management and tracking solutions for schools, universities, and corporates.
4. Chat! HCS/Era with Tech: Addressing healthcare challenges in rural India by providing virtual medical assistance and information.
5. Smart Tuberculosis Breath Sensor Device: A tuberculosis detection device with advanced breath analysis technology for accurate and quick diagnosis.
6. LogixMind: An e-learning platform focused on programming education, targeting the education and technology sectors.
7. Drone Safety System Under the Umbrella of Era with Tech: Ensures safety in drone operations through real-time monitoring and collision avoidance systems, catering to the aviation and technology sectors.
8. Envision: Offers a web-based augmented reality (AR) app for home design and visualization, serving the architecture and construction industries.
9. 101 Pure: Organic peanut butter, crafted with 101% purity.
10. Zen Vedik: Ashwagandha stress buster kit, bidding farewell to stress and embracing inner peace.
11. Krishi Mangalam Agro Pvt Ltd: Producing Organic Food.
12. Ishmeet Organics: Organic Skin Care Products.
13. Physioverse: A comprehensive kit containing all necessary study materials, ensuring easy access for students across different universities.
14. Studentsage: A revolutionary module within the StudentSage model by Metapsycho. It crafts personalized learning journeys for students, tailored to their unique strengths, learning styles, and aspirations.
15. Investo: A crowdfunding platform built on blockchain smart contracts, Investo addresses the security and authentication issues prevalent in current crowdfunding platforms.

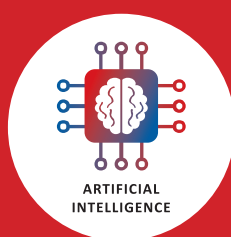


KRMU Skills Enhancing Competencies to Excel

KRMU Skills offers a comprehensive array of programmes to enhance students' and professionals' life skills, including problem-solving, multitasking, crisis management, effective team collaboration, communication skills, and personality development. In addition to these core competencies, KRMU provides value-added courses and open electives that allow students to explore specific skills relevant to employment, business, or entrepreneurial pursuits. Moreover, KRMU Skills offers coaching and mentoring for competitive exams like CAT, MAT, GMAT, and TOEFL, conveniently conducted on campus after university hours.

RESEARCH CENTER

- Centre of Excellence for Sustainable Development Goals (SDGs)
- The Centre of Excellence in Artificial Intelligence (AI)
- Centre for Criminology and Victimology
- Centre for Human Rights
- K.R. Mangalam Entrepreneurship and Incubation Centre (KEIC)
- Centre of Excellence for Robotics and Automation



Central Instrumentation Facility at K.R. Mangalam University

The Central Instrumentation Facility (CIF) housed within the Research and Development Cell (RDC) at K.R. Mangalam University is a premier technical center established at the cost of nearly 1 crore. Equipped with state-of-the-art instruments such as Fourier transform infrared Spectroscopy (FTIR), Thermogravimetric Analysis (TGA), UV Visible Spectrophotometer, and High-Performance Liquid Chromatography (HPLC), among others, the CIF accelerates research activities. Serving as a collaborative platform for interdisciplinary research, it facilitates innovation and exploration across various fields. The facility not only advances technical resources but also provides access to cutting-edge equipment for academic researchers, empowering them to conduct experiments effectively. Directed by Dr. Diwakar Padalia, with Prof. (Dr.) Manoj M. Gadewar as Associate Director (R&D) and Dr. Prabhakar Bhandari as Assistant Director (Operation and Maintenance), the CIF plays a pivotal role in driving scientific research and technological advancements.



DESIGN THINKING LAB: OUR KEY TO CULTIVATE INNOVATION

A design thinking lab serving as a dynamic hub where the stakeholders come together to explore, innovate, and solve real-world problems using design thinking principles.

KEY ROLES

- **Experiential Learning Environment:** Design Thinking Labs provide students with hands-on experience in applying design thinking methodologies to solve complex problems. Through practical exercises, projects, and workshops, students develop critical thinking, collaboration, and problem-solving skills.
- **Interdisciplinary Collaboration:** Collaboration across disciplines fosters a holistic approach to problem-solving and encourages innovative thinking by incorporating different perspectives.
- **Real-World Problem Solving:** Design Thinking Labs typically engage with real-world challenges posed by industry partners, community organizations, or societal issues. By working on these projects, students gain practical experience and contribute to meaningful solutions that have tangible impact beyond the classroom.
- **Innovation Incubator:** Design Thinking Labs serves as incubators for innovation and entrepreneurship. It provides support and resources for students to develop and prototype new ideas, products, or services, fostering a culture of innovation and creativity.



Institutional Collaborations

- Middlesex University
- Jiangxi Administration Institute, China
- Hubei University
- Jinggangshan University
- Medanta Institute of Education and Research
- Department of Physics, University of Houston
- Dabur Research Foundation
- Bosch India Foundation
- Hindustan Wellness Private Limited
- Dr. Shroff's Charity Eye Hospital
- Bialystok University
- The Institute of Company Secretaries of India (ICSI)
- Medox Hospital
- Vrankers Judiciary
- ImaginXP Giggle Galaxy Private Limited
- ICT Academy
- Edu Skills Membership Programme
- Xebia IT Architects India Private Limited
- SIEMENS Industry Solution Partner
- Sri Guru Gobind Singh College of Commerce, University of Delhi , New Delhi
- Heartfulness Education Trust
- Gargi College (University of Delhi)
- Infra Mantra Pvt Ltd
- Donation Box India Foundation
- HP Singh Agencies Private Limited
- Ramjas College (University of Delhi)
- Shobhit University
- Radisson Gurugram (A Unit of Nimitaya Hotel & Resorts Ltd)



- SRM University
- Gcec Global Foundation
- Imarticus Learning Private Limited
- Deep Red Coffee
- University of Delhi
- SRM Institute of Science and Technology School of Architecture and Interior Design
- Country Inn & Suites by Radisson, Gurugram Sohna Road.
- Phoenix drone flying LLP
- Climate Reality Project
- ACCA
- Save Aravali Trust
- C K Birla Hospital
- Fairmont Hotel
- Newspapers Association of India.
- KIIT College of Education
- Froyo Technologies (P) Ltd
- Guided Self Publishing, India

SCHOLARSHIPS & LOAN FACILITIES

K.R. Mangalam University offers scholarships and loan facilities to make education accessible and affordable. Our scholarships reward excellence and support diverse needs, while partnerships with major banks provide quick, hassle-free loan processing for all expenses.

Scholarships

- SUPER ACHIEVERS
- ALUMNI (K.R. MANGALAM SCHOOLS)
- SPORTS
- CUET/ JEE/ CAT/ MAT & OTHER COMPETITIVE EXAMS
- CHILDREN OF DEFENSE PERSONNEL
- FACULTY/ STAFF MEMBER CONCESSION
- SIBLINGS

Study Loans

- Assured Assistance from Major Banks
- Instant Sanctioning
- All-Expense Coverage
- Quick Disbursal

Partner Firms



STUDENT CONDUCT & RULES

1. Application of Rules

These rules shall apply to all the students of K.R. Mangalam University, Gurugram.

2. Acts of Indiscipline and Misconduct

Any act of misconduct committed by a student inside or outside the campus shall be an act of violation of discipline of the University. Without prejudice to the generality of the foregoing provision, violation of the discipline shall include:

- i. Disruption of teaching, study, examination, research, or administrative work, curricular or extra-curricular activity or residential life of the members of the University, including any attempt to prevent any member of the University or its staff from carrying on his or her work and doing any act reasonably likely to cause such disruption.
- ii. Damaging or defacing University property or the property of the members of the University or any other property inside or outside the University Campus
- iii. Engaging in any attempt as wrongful confinement of teachers, employees and students at the University or camping inside or creating nuisance inside the boundaries of houses of teachers, officers and other members of the University
- iv. Use of abusive and derogatory slogans or intimidating language or incitement of hatred and violence or any act calculated to further the same.
- v. Smoking in the University Campus
- vi. Eve-teasing and/or disrespectful behaviour towards girl students and women
- vii. Any assault upon or intimidation of or insulting behaviour towards a teacher, officer, employee or student or any other person

- viii. Causing or colluding in the unauthorized entry of any person in the campus or in the unauthorized occupation of any portion of university premises, including Hostels or Halls of Residence, by any person
- ix. Getting enrolled in more than one programme of study simultaneously in violation of university rules
- x. Committing forgery, tampering with or misuse of university documents or records, identification cards etc.
- xi. Furnishing false certificate or false information to any office under the control and jurisdiction of the University
- xii. Consuming or possessing alcoholic drinks, dangerous drugs, or other intoxicants in the University premises
- xiii. Indulging in acts of gambling in the University premises
- xiv. Possessing or using weapons such as knives, lathis, iron chains, iron rods, sticks, explosives and firearms in the University premises
- xv. Arousing communal, caste or regional feelings or creating disharmony among students
- xvi. Not disclosing one's identity when asked to do so by an employee or officer of the University who is authorized to ask for identity.
- xvii. Tearing of pages, defacing, burning, or destroying books etc. of library
- xviii. Unauthorized occupation of Hostel Rooms or unauthorized use of university furniture in one's Hostel Room or elsewhere
- xix. Accommodating guests or other persons in hostels without permission of the competent authority

Any act of moral turpitude

- a. Any offence under law
- b. Committing any of the offences specified in the examination rules of the University (Control of unfair means and disorderly conduct)

- c. Pasting of posters, distributing of pamphlets, handbills etc. of objectionable nature or writing on walls and disfiguring buildings
- d. Any other act considered by the Vice-Chancellor or the Discipline Committee to be an act of violation of discipline.

3. Nature of Penalties

The following penalties may, for acts of indiscipline or misconduct or for good and sufficient reasons, be imposed on a student, namely:

- i) Written warning and information to the guardian.
- ii) Fine as may be warranted by the nature of case.
- iii) Suspension from the Class/ Department/ College/ Hostel/ Mess/ Library or withdrawal of any other facility of this nature.
- iv) Suspension or cancellation of scholarships, fellowships or any financial assistance from any source, or recommendation to that effect to the sanctioning agency.
- v) Recovery of pecuniary loss caused to university property.
- vi) Disqualifying from holding any representative position in the Class/College/ Hostel/ Mess/ Sports/Clubs and in similar other bodies.
- vii) Hostel shift and Hall shift.
- viii) Expulsion from the Department/ Faculty/ Hostel/ Mess/ Library/ Clubs for a specified period.
- ix) Debarring from an examination.
- x) Expulsion from the University for a specified period.
- xi) Disqualifying from further studies, or prohibition for future admission or readmission.
- xii) Any student against whom an allegation of misconduct has been made may be suspended from the rolls of the University by the Vice -Chancellor, pending enquiry or pending trial on a cognizable offence by a court of Law.
- xiii) Termination from the rolls of the university resulting into cancellation of admission after proper inquiry and /or lodging FIR with the local police if warranted

Prohibition of Ragging

“The instructions for curbing ragging as conveyed by the UGC vide letter No. 1- 15/2009 (ARC) pt. III dated 17.03.2017, in view of the judgment of the Hon’ ble Supreme Court of India dated 08.05.2009 in Civil Appeal No. 887/2009 and also given in Chapter X be adhered to strictly (UGC Regulations on Curbing the Menace of Ragging in Higher Education Institutions, 2009, UGC website: www.ugc.ac.in& the Haryana Prohibition of Ragging in Educational Institution Ordinance 2012) :

Ragging in educational institutions is banned and anyone indulging in ragging is likely to be punished appropriately. The punishment may include expulsion/suspension from the institution or classes for a limited period or with a public apology. The punishment may also take shape of (i) withholding or withdrawing scholarships or fellowships and other benefits (ii) forfeiting campus placement opportunities or recommendations. (iii) debarring from appearing in any test or examination or other evaluation process (iv) debarring from representing the educational institution in any reasonable, national or international meet, tournament, youth festival, etc. (v) withholding results (vi) suspension or expulsion from hostel or mess (vii) cancellation of admission (viii) lodging of FIR with the local police. If the individuals committing or abetting ragging are not/cannot be identified, collective punishment can be awarded to act as a deterrent. Any disorderly conduct whether by words spoken or written or by an act which has the effect of teasing, treating or handling with rudeness any other students, indulging in rowdy or undisciplined activities which causes or is likely to cause annoyance, hardship or psychological harm or to raise fear apprehension thereof in fresher or junior students or asking the students to do any act or perform something which such students will not do in the ordinary course and which has the effect of causing or generating a sense of shame of embarrassment so as to adversely affect the physique or psyche of a fresher or a junior student or any type of abuse through electronic media or wrongful confinement, use of criminal force, assault as well as sexual offence, trespass, defamation or threat to defame will be deemed an act of ragging. Hon’ble Supreme Court of India in SPL (C) No. 24295/2004 in the matter of University of Kerala V/s Council of Principals, Colleges of Kerala and others has ordered that if any incident of ragging comes to the notice of the authority, the concerned student shall be given liberty to explain , if his/ her explanation is not found satisfactory, the authority would expel him/her from the Institution. The applicants at the time of admission are required to give an undertaking against ragging.

ATTENDANCE RULES & ELIGIBILITY FOR SEMESTER EXAMS

To be eligible for semester exams at K.R. Mangalam University, students must maintain a minimum attendance of 75% on each course. This policy promotes consistent participation, encouraging students to stay engaged and make the most of learning opportunities. Regular attendance not only enriches the educational experience but also prepares students better for exams by ensuring a thorough understanding of the curriculum.

ADMISSION AND SELECTION PROCEDURE

1. Apply online at <https://www.krmangalam.edu.in/admission/admission-process/> or visit the University Campus for an offline application.
2. Pay the application fee.
3. Complete the application form and submit it with all required documents.
4. Take the K.R. Mangalam University Entrance Examination (KREE).
5. Attend a faculty-led interview.
6. Shortlisted candidates will receive an offer of provisional admission.
7. To reserve your seat, pay the registration amount.
8. To confirm your seat, submit the full fee and



IMMERSION PROGRAMME AT MIDDLESEX UNIVERSITY– Dubai (4th–15th November 2024)

Innovative Business Practices and Sustainability: Global Perspectives

The Immersion Programme at Middlesex University, Dubai, offered a transformative learning journey for our students. Combining theoretical insights with hands-on experiences, the programme explored Business, Sustainability, Digital Marketing, Entrepreneurship, and Design Thinking.

Academic Sessions

Students engaged with distinguished faculty who delivered sessions on:

- Global business trends and leadership strategies.
- Sustainability in modern business models.
- Digital marketing innovations in competitive markets.
- Entrepreneurship, cultural intelligence, and innovation.
- Supply chain excellence and HRM in a global context.

Industry Visit

A visit to the DHL Innovation Center provided students with a practical understanding of innovation in logistics and sustainability. Hands-on experiences with cutting-edge technologies offered valuable insights into real-world business solutions.

Key Highlights

- Interactive workshops by Middlesex University's esteemed faculty.
- Practical exposure through an industry visit to DHL Innovation Center.
- Strengthened global academic ties with Middlesex University, Dubai.



Industry Visit - DHL Innovation Center



BHARTIYA GYAN VITHIKA

Celebrating India's Knowledge Legacy

“Preserving the wisdom of the past, empowering the minds of the present, and inspiring the visionaries of the future.”

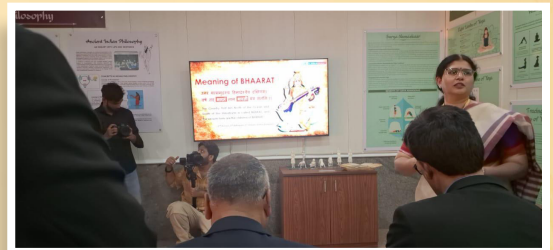
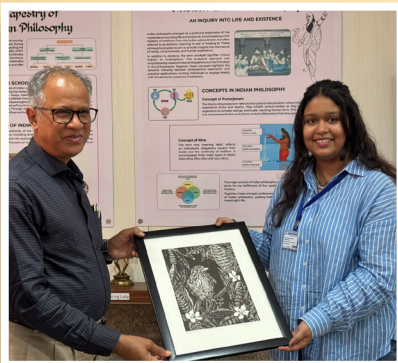
Bhartiya Gyan Vithika, an initiative by K.R. Mangalam University, is a unique gallery dedicated to the Indian Knowledge System (IKS). This space bridges ancient wisdom with modern innovation, offering a platform for interdisciplinary learning through thematic exhibitions, expert lectures, and workshops.

Key Themes Include:

- **Vedic Studies:** Insights into India's spiritual and cultural foundations.
- **Ancient Mathematics:** Problem-solving techniques rooted in history.
- **Ayurveda & Yoga:** Holistic health practices for well-being.
- **Vastushastra:** Architectural harmony and design principles.
- **Astrology (Jyotisha):** Celestial influences and cosmic rhythms.

Interactive Features:

- **AR/VR Experiences:** Virtual journeys to historical sites.
- **Audio-Visual Zone:** Immerse in Vedic chants and philosophical discourses.



CLUBS & SOCIETIES

The clubs and societies at K.R. Mangalam University provide students with avenues to participate in extracurricular activities, pursue their passions, hone new skills, and foster a sense of belonging. Oversight of the clubs and societal aspects of KRMU will be led by the following individuals:

- Dean of Student Welfare
- Assistant Dean of Student Welfare
- Faculty Experts

MUNC (Model United Nations Club)

Fosters critical thinking and global awareness through debates, discussions, and various activities promoting dialogue.



DIA Club

Designs innovative solutions enhancing quality of life, engaging students and faculty from Architecture and Design.



Dr. APJ Abdul Kalam Science Society

Promotes scientific temperament, interdisciplinary exchange, and innovation through practical application of knowledge.



NSS (National Service Scheme)

Engages students in social service initiatives, empowering them to serve society with integrity.



Chetna Society

Nurtures values and spiritual growth, fostering balance and well-being among students.



Rhetoric Club- A Literary Society

Enhances literary skills and fosters creativity through various competitions and events.



Health Society

Creates awareness and provides healthcare services to underprivileged communities, promoting well-being.



E-Yantra Society

Empowers students with technical knowledge in electronics and robotics, fostering innovation.

Computer Society of India

Facilitates professional development in computer science through seminars, quizzes, and contests.



Cultural Committee

Celebrates diversity and fosters creativity through cultural events and activities.

Mediaverse

Introduces students to media aspects, enhancing skills in photography, film, and digital content creation.



K.R. Mangalam Investment Club (KIC)

Provides practical experience in investment management, preparing students for careers in finance.

Management Society

Develops managerial and entrepreneurial skills, preparing students for diverse career paths.



Red Cross Society

Engages students in humanitarian activities and community service, fostering leadership skills.

Sports Committee

Promotes physical fitness and sportsmanship through various sporting activities and events.



Under 25 Club: Building Youth Culture

Connects students worldwide, fostering leadership development and career advancement.

ENTREPRENEURSHIP & STARTUPS

KRMU's Entrepreneurship and Innovation Club. KEIC aims to foster a culture of entrepreneurship on campus. We believe in unlocking our students' creativity to enable them to create the next generation of innovative companies and non-profits to solve some of the most pressing problems facing the nation.

Initiatives Taken by KEIC Foundation

Key Features

- Mentorship
- Business Development Assistance
- Technical Support
- Networking Opportunities
- Addressing Societal Issues
- Access to Government Schemes
- Co-working Spaces
- Legal and Accounting Support
- Access to Design Thinking Lab

Incubation Support

Pre-Incubation Programme

Our Pre-Incubation Programme is tailored to assist entrepreneurs in transforming their ideas into profitable businesses. Geared towards individuals or groups in the ideation stage of their product or service, this programme provides comprehensive support.

Programme Components

Collaboration with GCEC Global Foundation

KRMU runs BBA entrepreneurship course in collaboration with GCEC global foundation. Incubated start-up has got the opportunity to pitch the IDEA of FOMO at shark Tank and got the grant. The founder of the start-up Garang is mentor for our BBA entrepreneurship students and has taught them during the sessions.

- SEED Grant
- Training Sessions
- Business Plan Preparation
- Mentoring
- Product Development Assistance
- Technical Assistance
- Networking Events

Incubation Programme

Our Incubation Programme is designed to empower entrepreneurs in transforming their ideas into successful ventures. Tailored for individuals or groups in the prototype and scaling stage, this programme offers a holistic support system.

Programme Components

1. Training for Idea Execution
2. Business Plan Development
3. Business Mentoring
4. Product Development Support
5. Technical Support
6. Access to Networking Events
7. Access to Funding Networks



Events of KEIC

Initiatives to Foster Entrepreneurship Ecosystem

- Mentorship Programmes
- Bootcamps
- Pitching Sessions
- Hackathons
- Networking Events
- Incubation Programme
- Government Scheme Workshops
- MSME Accreditation Support
- Collaborative Projects
- Industry Connect Programmes
- Legal Workshops

Startups

SWA Locker

Founder- Taranpreet Kaur

Our product provides a solution to all of the difficulties described above. Our locker is a combination of real and digital storage placed behind the switchboard, allowing individuals to

store all of their vital data and belongings safely in both physical and digital storage. This device is relatively affordable (up to 15k) and can be utilised by both urban and rural residents because it will be installed behind the switchboard.

B Track

Founder- Naman Punn

Our team is creating a plugin that universities and colleges can integrate into their current app or website. This plugin offers features such as real-time bus tracking, an online attendance system, alerts for bus ignition, and regular bus checkups. It benefits both students and school/university officials.

Era with Tech

Founder- Shubh Saxena

Era with Tech is a tech startup which is currently working on its first project name CHAT! HCS will revolutionise the Meditech sector with artificial intelligence. CHAT! HCS recommends OTC medicine according to the signs and symptoms of the patients. If the symptoms are severe then it connects to a doctor virtually.

Ranking of KEIC



SPECIALISED CELLS



K.R. Mangalam University boasts of a dynamic set of students who aspire to make it big in the consulting industry. Cells@ KRMU is an “of the students, by the university, for the students” type of diverse and inclusive platform which brings an array of opportunities for students to explore and enhance their talents and strengths through. The forum enables an understanding of consulting and strategem, while also helping clients resolve their business glitches or identifying prospects for expansion and improvements at the same time. We achieve these goals by providing KASAM approach to our members: Knowledge, Attitude, Skills, Ambition and Moral Values.

Vision

The panoramic vision includes a strong building and growing of the Consulting Club by utilizing the potential of students in attracting top personnel from

coveted consulting firms to the campus through awareness, skill-building, and active networking.

Mission

Our overall mission spans a creation of awareness and generation of interest in the consulting realm among all students who aspire to propel their career in this domain. The forums shall serve as a nucleus to create and maintain long lasting and lucrative relationships with the best and approachable consulting firms. It shall also make all relevant resources available to promote a sense of competency and confidence among the students & support them through every step of the recruitment process at KRMU.

The Six Cells are as mentioned below:

- E- Cell
- Investment Cell
- Anti Discrimination Cell
- Research Cell
- Consultancy Cell
- IPR Cell



I would like to extend my gratitude to the Training and Placement Cell of K.R. Mangalam University for their continued efforts in providing ample amount of chances to students. I am grateful to each mentor who guided me to develop my academic and interpersonal skills. Choosing K.R. Mangalam University was a great decision that helped me to pursue my dream.

Abhinav Anand
B.Tech CSE



Embarking on the BBA journey has been rewarding. The interactive sessions, industry exposure, and supportive faculty have nurtured my leadership skills and prepared me for the challenges of the business world.

Kalpana
BBA



The comprehensive curriculum at SJMC prepared me for the role of Content Manager at Tourhq. I'm grateful for the supportive environment and industry-focused learning.

Mr. Dylan Mervyn Jobe
Content Manager

STUDENTS HELPDESK

K.R. Mangalam University takes pride in its dedicated Student Helpdesk, designed to offer comprehensive support for students throughout their academic journey. The helpdesk serves as a central point of contact for a wide range of inquiries, including academic queries, admission procedures, campus facilities, and other student-related concerns. Whether students require assistance with course selection, exam schedules, or understanding university policies, the helpdesk team is always available to provide clear and accurate information. In addition, the helpdesk offers guidance on accessing various campus services, such as the library, laboratories, and student organizations, ensuring that students make the most of the resources available to them. Our team is committed to addressing each query with professionalism and efficiency, helping students navigate university life with ease. Through this support system, we aim to create an environment where students can focus on their academic and personal growth without unnecessary obstacles, ensuring a smooth and fulfilling university experience from admission to graduation.

Student Helpdesk No: 8192888444

OMBUDSPERSON

- There shall be one or more part-time functionaries designated as Ombudspersons to hear, and decide on, appeals preferred against the decisions of the student grievance redressal committees (SGRC).
 - The Ombudsperson shall be a retired Vice-Chancellor or a retired Professor (who has worked as Dean/ HOD) and has 10 years' experience as a Professor at State/Central Universities/Institutions of National Importance/Deemed to be Universities or a former District Judge.
 - The Ombudsperson shall not, at the time of appointment, during one year before appointment, or in the course of his/her tenure as Ombudsperson, be in conflict of interest with the Institution where his/her personal relationship, professional affiliations or financial interest may compromise or reasonably appear to compromise, the independence of judgment towards the Institution.
-

FUNCTIONS OF OMBUDSPERSON

- (i) The Ombudsperson shall hear appeals from an aggrieved student, only after the student has availed all other remedies provided under these regulations.
- (ii) While issues of malpractice in the conduct of examination or in the process of evaluation may be referred to the Ombudsperson, no appeal or application for revaluation or re-totalling of answer sheets from an examination, shall be entertained by the Ombudsperson unless specific irregularity materially affecting the outcome or specific instance of discrimination is indicated.
- (iii) The Ombudsperson may avail assistance of any person, as amicus curiae, for hearing complaints of alleged discrimination.
- (iv) The Ombudsperson shall make all efforts to resolve the grievances within a period of 30 days of receiving the appeal from the aggrieved student(s).

COMMITTEES ON ANTI-RAGGING

Ragging is a punishable offense under law, as per the 2009 Supreme Court order (SLP No. 24295 of 2006), and can result in imprisonment or heavy penalties. Ragging includes physical or mental abuse, use of abusive language, or forcing someone to perform harmful acts.

Students must uphold AET Group's tradition and avoid any form of ragging. Violators will face expulsion and legal action.

ANTI-RAGGING COMMITTEE MEMBERS:

1. **Chairperson:** Vice Chancellor (Ex-officio)
2. **Civil Administration:** Tehsildar, Sohna
3. **Police Administration:** SHO, Sohna
4. **Members:** Registrar (Ex-officio), Chief Warden (Ex-officio), Dean Student Welfare, Lt Col Vijay Chaudhary (Security), Dr. Shweta Bansal, Dr. Imran Siraj, Hostel Wardens
5. **Faculty Members:** Mr. Karan Singh, Dr. Inderpreet Kaur, Ar. Akansha Singh, Dr. Manmohan Singh
6. **Student Members:** Aryan Chaudhary, Anushka Singh
7. **Member Secretary:** Proctor (Ex-officio)

STUDENT DISCIPLINE COMMITTEE

The Student Discipline Committee, empowered by the University First Statute, ensures discipline and decorum, guiding students through rules to promote positive behavior. Complaints can be made in person, by mail, or through the contact provided.

The students discipline committee, empowering by the first statute, ensure discipline and decorum, guidance.

STUDENT DISCIPLINE COMMITTEE MEMBERS:

1. **Chairperson:** Dr. Diwakar Padalia (Proctor)
2. **Members:** Lt Col Vijay Chaudhary, Dean Student Welfare, Dr. Shweta Bansal, Dr. Kaushal Kumar, Dr. Shobna Jeet, Dr. Shivani Wadhwa, Dr. Mazher, Ar. Praveen Gupta, Mr. Rahul Singh
3. **Member Secretary:** Dr. Imran Siraj (Deputy Proctor)

STUDENT GRIEVANCE REDRESSAL POLICY

In compliance with under clause (g) of sub-section (1) of Section 26 of the University Grants Commission Act, 1956 (3 of 1956), and in supersession of the University Grants Commission (Grievance Redressal) Regulations, 2012, the Grievance Redressal Committee shall consist of the following members:

An aggrieved by said offence may make a complaint in accordance with the regulations of the Grievance Redressal Committee either in person or through the mail or contact appended below.

KRMU GRIEVANCE REDRESSAL COMMITTEE MEMBERS:

1. **Chairperson:** Dr. Inderpreet Kaur
2. **Members:** Prof. Anjana Singh (Dean Student Welfare), Dr. Diwakar Padalia (Proctor), Dr. Monika Khatkar, Dr. Deepak Kumar, Ms. Amrita Singh, HR Manager (Ex-officio), Dr. Manju Rani
3. **Student Members:** Mr. Mohit Kumar (BALLB), Ms. Khushi Jain (MBA)
4. **Member Secretary:** Dr. Anshul Saluja (Assistant Dean, Student Welfare)

LAST DATE OF ADMISSION

At K.R. Mangalam University, the KRMU Entrance Exam (KREE) follows a rolling examination process, allowing students the flexibility to apply and take the exam throughout the admissions period. The final deadline for applications this year is 31st October, so aspiring students are encouraged to complete their submissions promptly to secure their place at KRMU.

CENTRES OF EXCELLENCE

K.R. Mangalam University takes pride in its three Centres of Excellence, fostering innovation, research, and skill development across key domains. These centres play a pivotal role in advancing knowledge and practical solutions to meet the demands of today's fast-evolving world.

1. Centre of Excellence in Artificial Intelligence (CoE-AI)

Established on February 12, 2022, this centre addresses the increasing importance of Artificial Intelligence. With AI and machine learning revolutionizing various sectors, the centre provides a dynamic environment where students can hone their skills and contribute to innovations in AI technologies.

2. Robotics and Automation Centre of Excellence

Dedicated to advancing research and industry collaboration in Robotics and Automation, this centre empowers students to engage in transformative technologies. It fosters creativity and technical excellence, helping students work on innovative solutions for real-world challenges in automation.

3. Centre of Excellence for Sustainable Development Goals (SDGs)

As a common university-wide initiative, this centre focuses on promoting the United Nations Sustainable Development Goals (SDGs). It raises awareness, provides education, and supports research related to sustainability. The centre has actively published research papers and articles on various SDGs such as SDG 2, 3, 7, 8, 9, 11, 17, and more. Students participate in value-added courses, electives on environmental sustainability, field visits, and outreach programmes, equipping them with skills for a sustainable future.

Together, these Centres of Excellence at K.R. Mangalam University offer students unparalleled opportunities to engage in cutting-edge research, gain industry-relevant experience, and contribute to a more sustainable and technologically advanced world.

RESERVATION POLICY

K.R. Mangalam University (KRMU) was established as a State Private University under the Haryana Private Universities Act, 2006, as amended in 2013. The University reserves 25% of seats for Haryana Domicile candidates, with 10% of those seats reserved for Scheduled Caste (SC) students from Haryana. This policy applies to all undergraduate (UG) and postgraduate (PG) admissions.

RESERVATION GUIDELINES:

- Unfilled SC seats are offered to general category candidates from Haryana.
- Any unfilled Haryana Domicile seats are made available to general category candidates.

KRMU complies with all admission regulations set by the Government of Haryana. The university also upholds the rights of reserved category students, ensuring they receive the benefits and relaxations outlined in the state's Reservation Policy under the Haryana State Private Universities Act, 2006.

CONTACT NUMBER OF IMPORTANT PEOPLE AT KRMU

- **Admission** 01148884888, 8800697010 – 15, 8192888444
- **Anti-Ragging** **Helpline:** 0124-2867800, **Extn.** 1017, 8800697002
- **Hostel** **Boys:** 8800697005, **Girls:** 8800697006
- **Grievance Redressal** 0124-2867800, **Extn.** 1017, 8800697002



INTERNATIONAL EXPOSURE, INTERNATIONAL COLLABORATIONS & MOUs

KRMU fosters global collaboration for knowledge, offering diverse experiences, research projects, and exchange programmes. As a hub for international connections, we facilitate MOUs with leading institutions worldwide, aiming to become a global education hub. Committed to this vision, we establish alliances for academic and research initiatives on a global scale.

Students Visit at University of Portsmouth- 2023

K.R. Mangalam University sent students to a UK Summer School for Business and Management, enhancing their learning beyond classrooms.

Students Activities



Visiting Madame Tussauds and the London Eye, offering immersive experiences in the heart of London.



On the **Final day** of our Summer School programme, students received certificates.

INTERNATIONAL COLLABORATIONS



MOUs

- German Varsity, Germany
- University of Ferrara, Italy
- Universidad Católica de Temuco, Chile
- Namangan Engineering-Construction Institute, Namangan, Uzbekistan
- Bialystok University of Technology, Bialystok
- Saint Petersburg State University of Aerospace Instrumentation, Russia
- Dubna State University, Dubna, Moscow
- Rossiya Segodnya International Information Agency, Founder of the Sputnik News Agency, Moscow, Russia
- The Open University Worldwide Limited, UK
- Middlesex University, London, UK
- The Confucius Institute Headquarters, China
- University of Houston (Department of Mathematics), Texas, USA
- University of Houston (Department of Physics), Texas, USA
- Hubei University, China
- Jiangxi Administration Institute, China
- Jinggangshan University, China
- Cardiff Metropolitan University, UK
- Roehampton University, England & Wales, UK
- University of Plymouth, UK
- University of Portsmouth, UK

ALUMNI ASSOCIATION



The Alumni Association provides an interface between the alumni, staff and students of KRMU and have contributed significantly to the development of the University through financial and non-financial means. Building upon the proud tradition of K.R. Mangalam University, the University encourages and fosters the lifelong involvement of its alumni in the activities of the University. Engaging the community of alumni and celebrating their success, the university commits to adding value to the lives and growth of existing students.

Alumni play a significant role in the development and growth of university. Their contributions range from financial support through donations and endowments, to sharing their expertise and networks for the benefit of current students. Alumni contributions include participating in mentorship programs, offering internships and job opportunities, and volunteering their time and resources for various university initiatives. This strong bond between alumni and their alma mater helps to strengthen the university community and create a sense of pride and loyalty among graduates.

Alumni involvement in university development fosters a sense of continuity and tradition, as they bring their unique experiences and perspectives to support the advancement of education and research at their alma mater.

Those alumni who wish to be a part of the Alumni Association of K.R. Mangalam University may contest for the positions by filling nomination forms. They register themselves as a member by availing any of the Lifetime Membership or the Annual Membership offered by the university.

Alumni contributes and engages significantly to the development of institution through academic and other support system.

Alumni Association of K.R. Mangalam University is

a registered society under the Haryana Registration and Regulation of Societies Act, 2012 (Haryana Act No. 1 of 2012) with Registration No. 02678 (year of registration 2021).

Alumni Association of an Educational Institute should provide better forum to students graduating from it, so as to refresh the old memories and to network with one another, both socially and professionally. The forum for alumni is made to maintain bonds that can prove to be an invaluable career asset for both Alumni and the students. Thereby a common platform is built as KR Mangalam University Alumni Association. The Alumni Cell is a place to appreciate the Alumni for their contribution towards Institute as their Alma mater and strengthen the bond of brotherhood among Alumni. It also recognizes the personal/professional achievements of the Alumni during the Alumni meets conducted once in every year Vision K.R. Mangalam University Alumni Association will act as a forum to close the gap in student alumni interaction, driven by ideals and values that will ensure the advancement of both current and future alumnus with assistance in creating a social, intellectual, and inspirational capital for KR MANGALAM UNIVERSITY and its students.



TESTIMONIALS



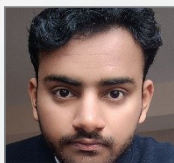
Ms. Vanshika Tomar
Cabin Attendant, Interglobe Aviation Limited (Indigo Airlines)
My time at SJMC was invaluable in shaping my career as a cabin attendant. Thanks to the practical training and industry insights, I confidently serve passengers at Indigo Airlines.



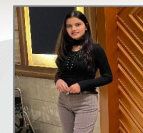
HEMA VASHISTHA
M. Sc.
The entire reason in getting quality education is to transform learning into acquiring, a current circumstance into a superior circumstance, and ability into significant living and K.R. Mangalam University gives you that stage which upgrades you in every above thing.

Mr. Abhijeet Roy Choudhury

Social Media Executive, TV 100
SJMC's holistic approach to social media education paved the way for my career as a Social Media Executive at TV 100. I'm thankful for the transformative experience.



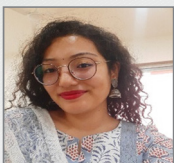
Mr. Abhay Barwal
B.Sc. Programme
Studying science at SBAS, K.R. Mangalam University equipped me with critical thinking, problem-solving skills, and a passion for discovery. It's been an enriching journey.



Ms Chhavi
B.Sc. Chemistry
It has been a transformative experience at K.R. Mangalam University. The university's emphasizes on experiential learning, practical skills and prepares us for success in the professional world. I am grateful for the invaluable education and unforgettable memories I have gained here.



Suvisha Dhar (Gold Medalist)
HR Executive at Peko Payment Pvt Ltd.
As a proud SOAS alumna from K.R. Mangalam University, I cherish the rigorous academics and diverse perspectives that shaped me. Now, as an HR Executive, I apply those invaluable skills daily.



Anushka Rawat
At K.R. Mangalam University the hands-on training provided in the field along with theoretical knowledge helps us to face real-life problems faced by the farming community.



Saqlain
Farm Supervisor, Gir Amritphal Gaushala Trust
K.R. Mangalam University excels with its great environment and ragging-free campus, particularly in hostel life. Now a farm supervisor, I pursue my passion for natural farming.



Ankita
BBA
Choosing BBA has been pivotal for my career aspirations. The curriculum's balance of theory and practical exposure has sharpened my business acumen. Grateful for the supportive learning environment and dedicated faculty.



Arjun Sude
BBA
Embracing the BBA program has been transformative. The dynamic learning environment and emphasis on real-world applications have empowered me with the skills needed to excel in business management and leadership roles.



Kalpana
BBA
Embarking on the BBA journey has been rewarding. The interactive sessions, industry exposure, and supportive faculty have nurtured my leadership skills and prepared me for the challenges of the business world.

EXTENSION AND OUTREACH ACTIVITIES



K.R. Mangalam University is unwaveringly committed with time-honoured tradition of addressing the needs and realizing its vision of catalysing community development through extension activities & outreach programmes as a vital part of the curriculum. The university promotes various extracurricular and outreach activities through organized service units like National Service Scheme (NSS) & Red Cross Society. Moreover, the university places a strong emphasis on moulding socially responsible lifelong learners who actively contribute to the betterment of their nation.

Students are encouraged to participate in environment and social awareness programmes through various NGOs and MoU partners & collaboration such as the Pranab Mukherjee Foundation, Human Touch Foundation, Heartfulness, Smiling Tree, Green Planters, Meant 4 Environment Foundation etc. with a host of activities and association-guided activities. All departments are engaged in community service activity in the domains of health, education, sanitation, environment.

Major work has been carried out for environment sustainability among nearby villages of Sohna. An attempt has been made to understand the implications of stubble burning in villages of Haryana, and suggest methods to mitigate these practices, being a major cause of air pollution.

The institution also conducts financial literacy awareness where efforts were made towards sensitization of microfinance among women in village Ghangola and successfully created two self-help groups. Furthermore, in block Nuh, the university has worked for sustainable livelihood and women empowerment fostering micro-entrepreneurship as an outcome of self-help groups. University has furthered its outreach through health camps, computer literacy programmes, plantation drives and campaigns like "Mission Shakti," aimed at menstrual sanitation.

With the objective of creating awareness about the good dietary habits, hygiene and lifestyle the Health Society of K.R. Mangalam University through Health Society has been organizing Health Awareness Camp in Government Schools, local villages with the objective of disease prevention and well-being of the community.

To further the cause the University has taken up Arogyam where thrust has been given for Anaemia Mukta Bharat where anaemia remains a significant health concern globally, affecting a large portion of the population, especially in rural areas with limited access to health care. Recognizing the gravity of the situation, the School of Medical and Allied Sciences took the initiative to organize Anaemia Camp.

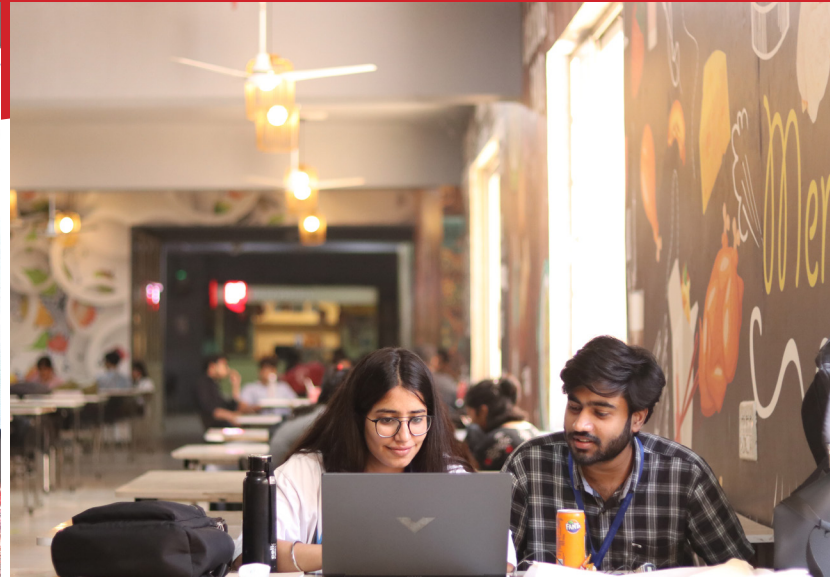
K.R. Mangalam University always stands first to serve the nation not only in education but also in diverse work for the society with upmost integrity and honesty. By association with the National Service scheme programme of the Haryana Govt., KRMU gives their best contribution in social reform activities.

NSS-KRMU team awarded by the district legal services authority (DLSA) Delhi and Gurugram for their outstanding contribution towards social services and welfare activities.

In a journey of last 5 years, NSS volunteers actively participated in various activities on national, state and district level such as National Integration Camp (NIC) and Pravasi Bhartiya Diwas, Swachh Bharat Summer internship (SBSI), National Youth Festival, Swachhta Pakhwada, State NSS Awards Function, Pre-Republic Day parade Camp, Adventure Camps, Blood Donation Camps, National Unity Day celebration, Legal awareness Programmes, Van Mahotsav and many more.

LIFE@KRMU

Our campus is a thriving ground for a plethora of clubs, societies, and extracurricular activities, catering to a wide range of interests. Whether it's sports, cultural events, tech fests, or academic societies, students have ample opportunities to explore, engage, and excel beyond the classroom. This diverse environment ensures that every student finds their niche, fostering a community where passions are pursued and talents are nurtured.





STATUTORY APPROVALS



University Grants Commission

University Grants Commission (UGC)

K.R. Mangalam University and the degrees awarded by the university are recognized by the UGC under section 2f of the UGC Act vide Letter No. F.No.8-11/2015 (CPP-I/PU) dated October 13, 2015.



State Government, Haryana

K.R. Mangalam University, Haryana, has been established as a State Private University at Sohna Road, Gurugram, Delhi-NCR by The Haryana Private Universities (Amendment) Act No. 8 of 2013, notified on May 3, 2013.



Bar Council of India (BCI)

Bar Council of India has approved K.R. Mangalam University's legal courses, viz; BBA LL.B. (Hons), B.Com LL.B. (Hons), B.A. LL.B. (Hons), LL.B. (Hons), LL.M. after verifying the various requirements to be satisfied for awarding of the degree.



Council of Architecture

Council of Architecture (COA)

Council of Architecture has approved the undergraduate course of Bachelor in Architecture after verifying the various requirements to be satisfied for awarding of the degree.

Ref: CA/5/Academic-HR21



Pharmacy Council of India (PCI)

Pharmacy Council of India has approved K.R. Mangalam University for awarding degrees in B.Pharm, D.Pharm and M.Pharm in Pharmacology & Pharmaceutics courses.



National Council for Teacher Education (NCTE)

NCTE Jaipur has approved B. Ed. and B. El. Ed. courses at K.R. Mangalam University under clause 7(16) of the NCTE Regulations, 2014.



Fashion Design Council in India (FDCI)

The Fashion Design Council of India is a not-for-profit organization that works to further the business of fashion in India and ensures its sustainable growth. It promotes and nurtures its over 400 members who represent the best in Indian fashion.



Association of Indian Universities (AIU)

The formation of the Inter-University Board (IUB) of India as an Apex Inter-University Organization on March 23, 1925, was the culmination of the need to bring together all the universities in India.



Association of Commonwealth Universities (ACU)

The Association of Commonwealth Universities is an international organisation dedicated to building a better world through higher education.